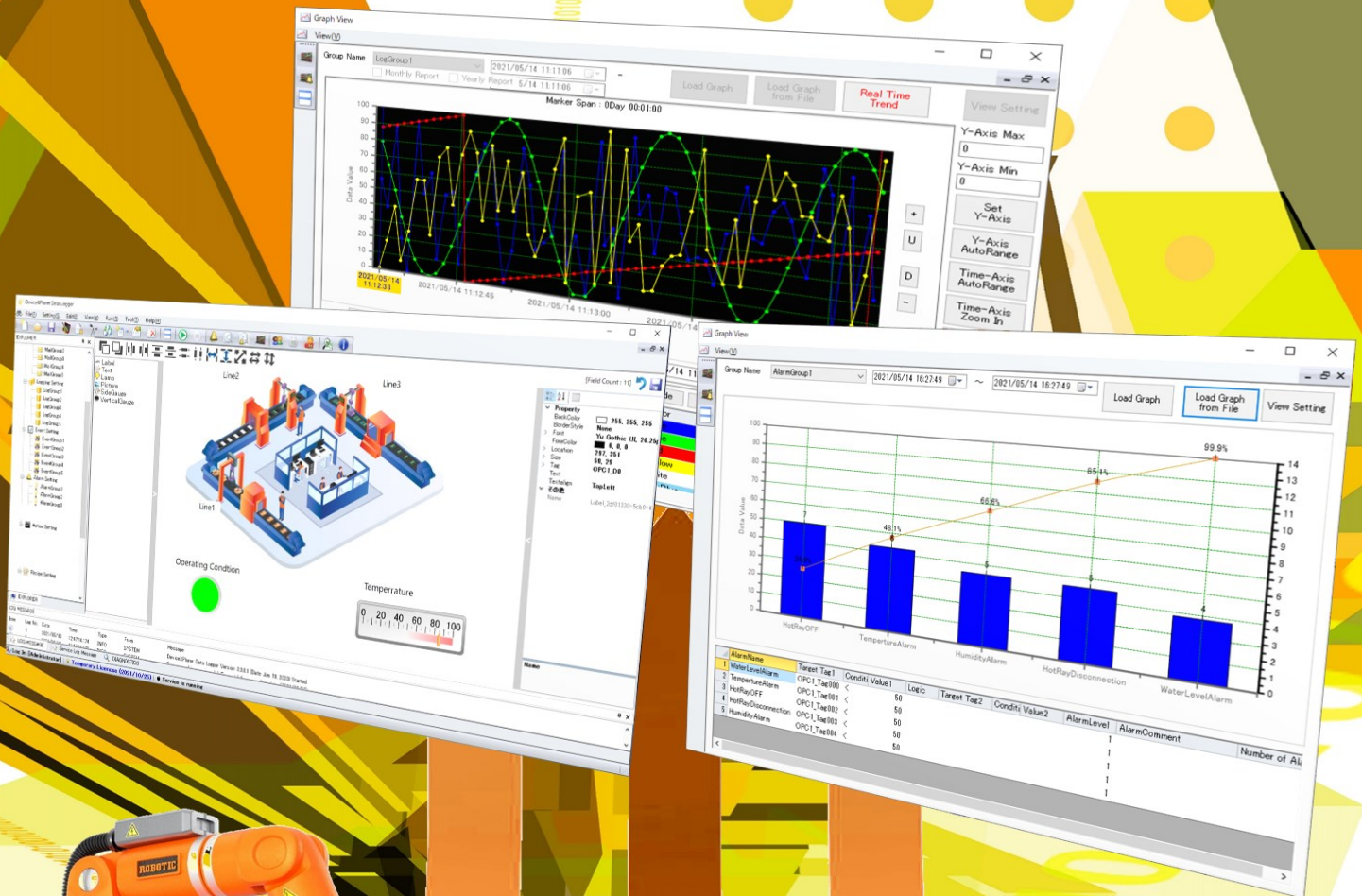


Dxp LOGGER



Logging and monitoring data of production sites

Access to data of a wide variety of equipment

By using it together with the DeviceXplorer® OPC Server and DeviceGateway®, it is possible to collect data of Multi-vendor equipment such as PLCs.

3-step setup

Data can be easily collected and monitored in 3 steps (Server setting, Collect data setting, Logging setting).

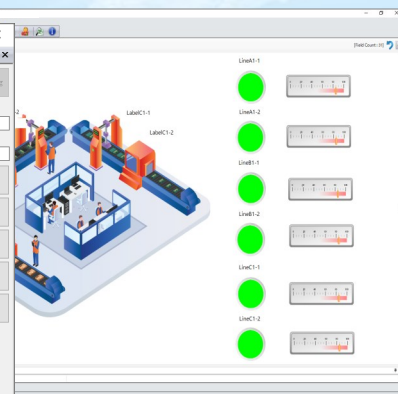
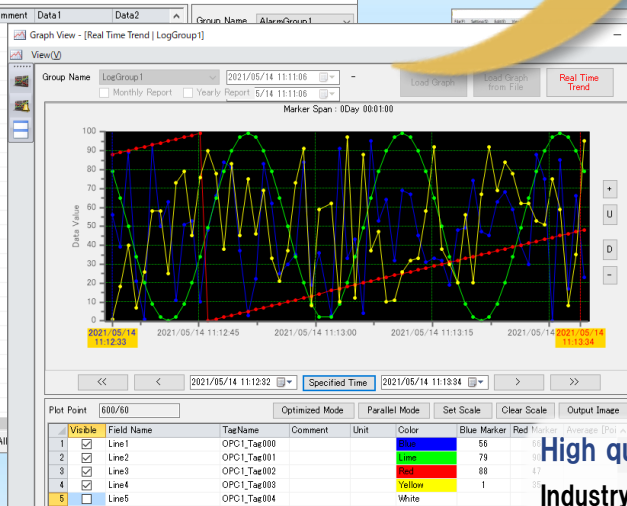
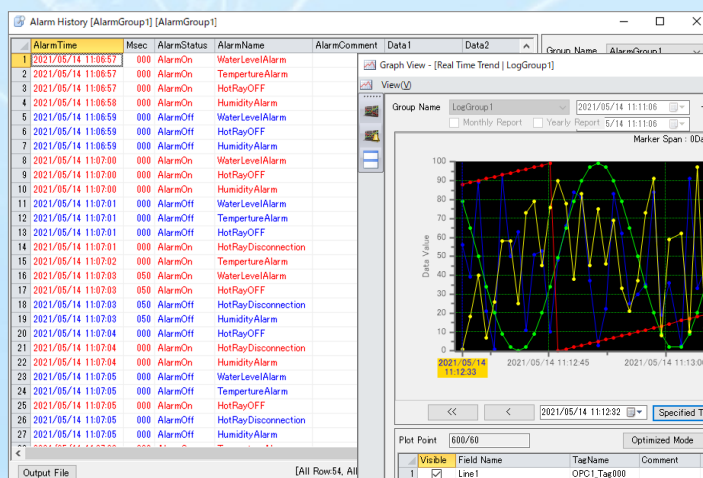


CSV file



Database

DxpLOGGER



High quality system

Industry standard OPC communication provides a flexible, reliable, and highly scalable system of data exchange.



Communication

DeviceXplorer®
OPC Server

DxpSERVER



DeviceGateway®

Device Gateway



Vendor specific network

Ethernet

Serial

Production sites



Machine tools



PLC



Robots



Sensors

New functions in Ver.3

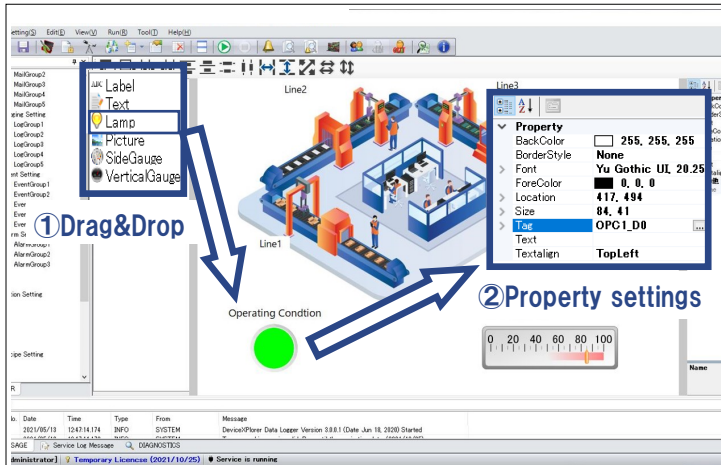
Simple monitor function

NEW!!

(Enterprise Only)

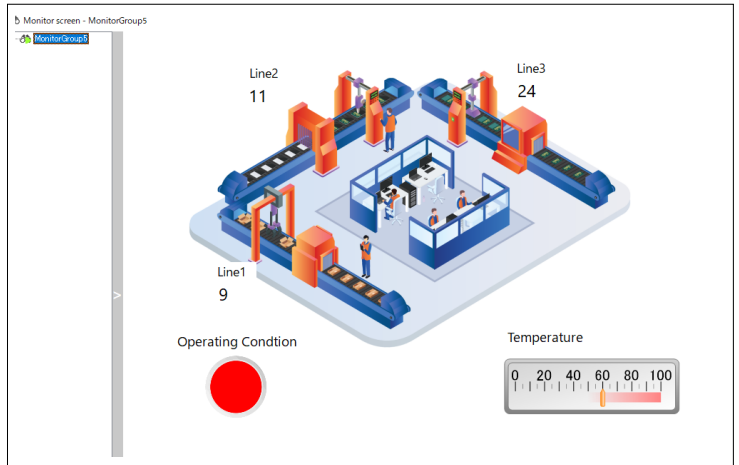
Items such as labels, lamps, and gauges can be placed on the screen to monitor equipment data in real time.

Maker Window



Easy item placement by dragging and dropping

Viewer Window



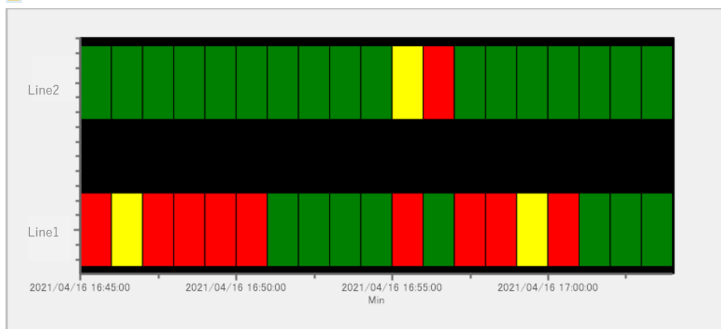
Real-time monitoring

Graph enhancement

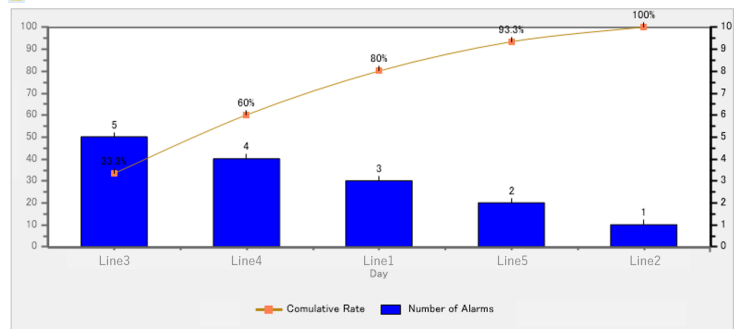
NEW!!

The graph function has been enhanced by adding operation graphs, pareto charts, pie charts, and stacked bar charts. These can be used to improve quality by identifying problems and understanding their causes.

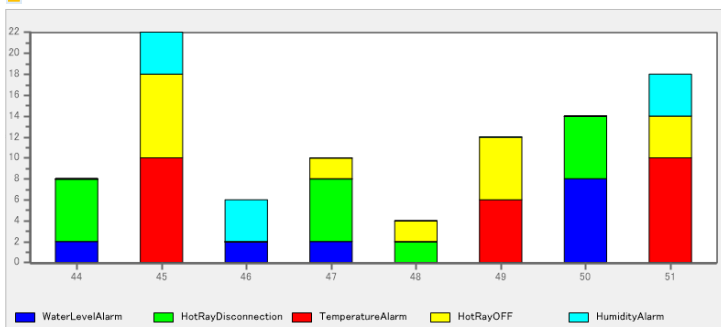
Operation graph



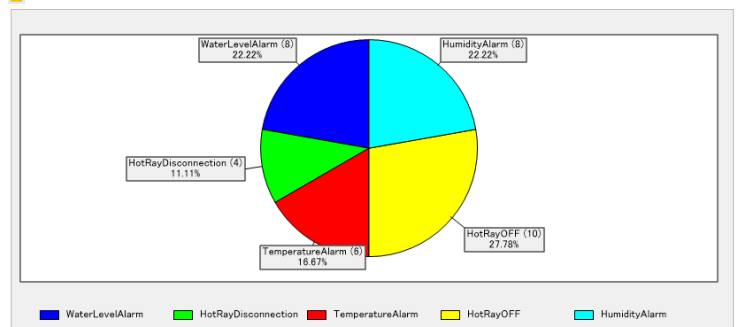
Pareto chart



Laminated bar graph



Pie chart



Service application support

NEW!!

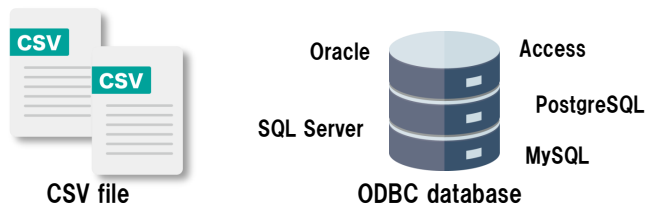
Data collection runs in the background of the service application. Data can be collected without logging on to Windows.

Data logging

●Supporting multiple databases

Logged data can be saved as a CSV file or in various databases such as SQL Server, Access, MySQL, Oracle and PostgreSQL through an ODBC driver.

You can select the INSERT or UPDATE commands when saving data.



●Supporting Cloud databases

Data logging in PaaS type databases such as Windows Azure and Amazon Web Services supported, for easy collection and analysis of cloud-based systems.

●Logging at optimal speed

Periodic Logging and Event Logging from PLC triggers are supported.

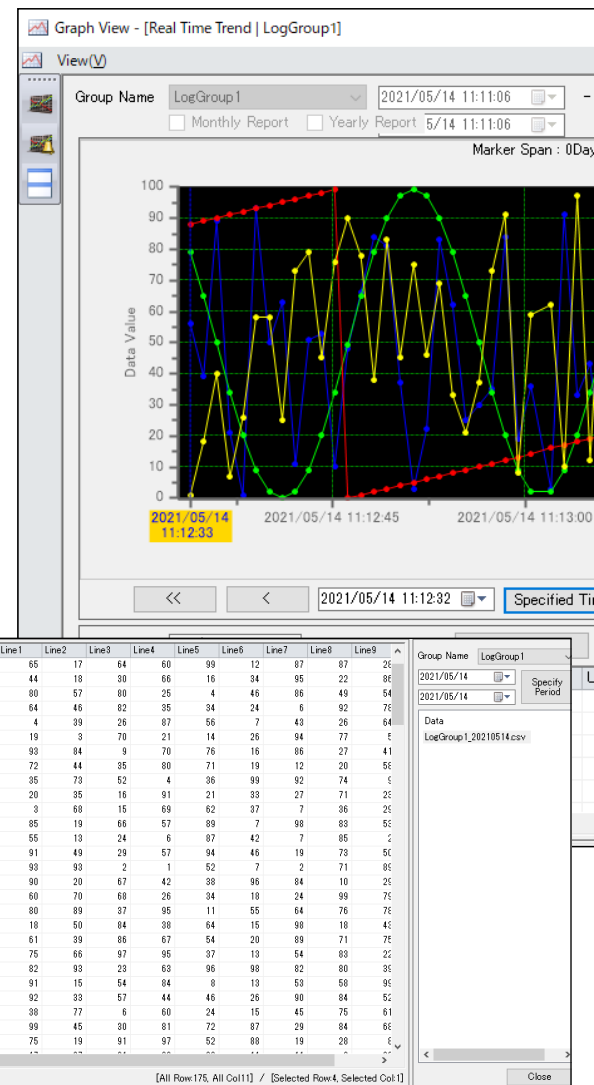
It is possible to set the collecting period for each group separately, so that the network load can be taken into consideration.

●Preventing loss of collected data

Even if the connection with the storage location is lost, collected data is buffered in a local disk.

Buffered data will be saved in the storage location when the connection is restored.

OPC UA supported d DeviceXPlorer



Data displaying

●Spread sheet

By searching for a specific date, transition of collected data can be displayed in chronological order.

Necessary data can also be extracted by filtering the conditions of displayed data.

CSV

EXCEL

Displayed data can be output to CSV or EXCEL file format.

Actions

●Batch file/Fixed-cycle/FTP functions

You can set various actions, such as Batch file processing, which performs the execution function of the user program, Fixed-cycle writing processing for Heartbeats, and FTP function to transfer files.

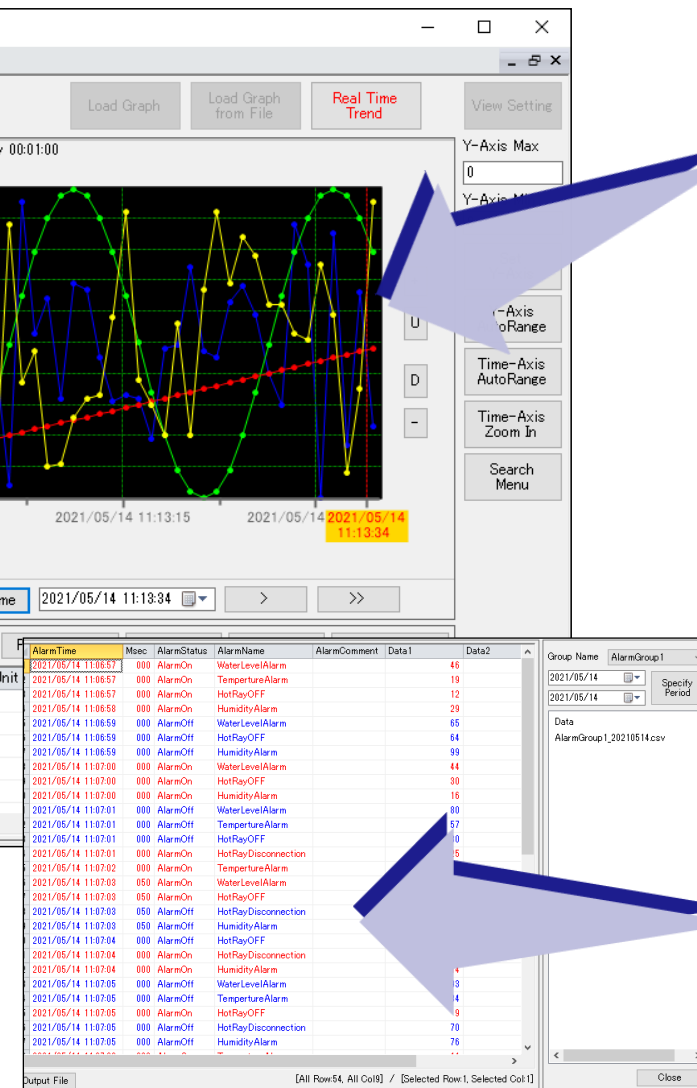
Multilingual display

●Supporting 3 languages

Display language can be changed between Japanese, English, and Chinese, so it can be used for overseas system projects.



Data logging software Data Logger



Trend graphs

Historical trend graphs

Status transition can be displayed graphically. You can specify the color of the target data, calculate average, minimum, and maximum values, expand the display range, and many other settings.

Real-time trend graphs

Collecting data is enabled to monitor trends in real time. It can display trends over any period.

Optimizing trend graphs

Equipped with an intuitively easy-to-understand graph display. By switching to a logarithmic graph, you can also check the vacuum degree and decibel value at a glance.

Alarm monitoring

Alarm displaying

Alarm conditions can be defined flexibly with a combination of threshold judgment, comparison conditions, and logical expressions. In addition to the current alarms, you can specify a date in the calendar and view a list of past alarms, along with their occurrences, recovery times, and data values.

E-mail Notification

In the event of an alarm, you can be notified by e-mail, which helps to reduce downtime.

You can register multiple e-mail destinations to share the status of equipment in real time.



Reporting

2021/04/27 10:00 - 2021/04/28 10:00

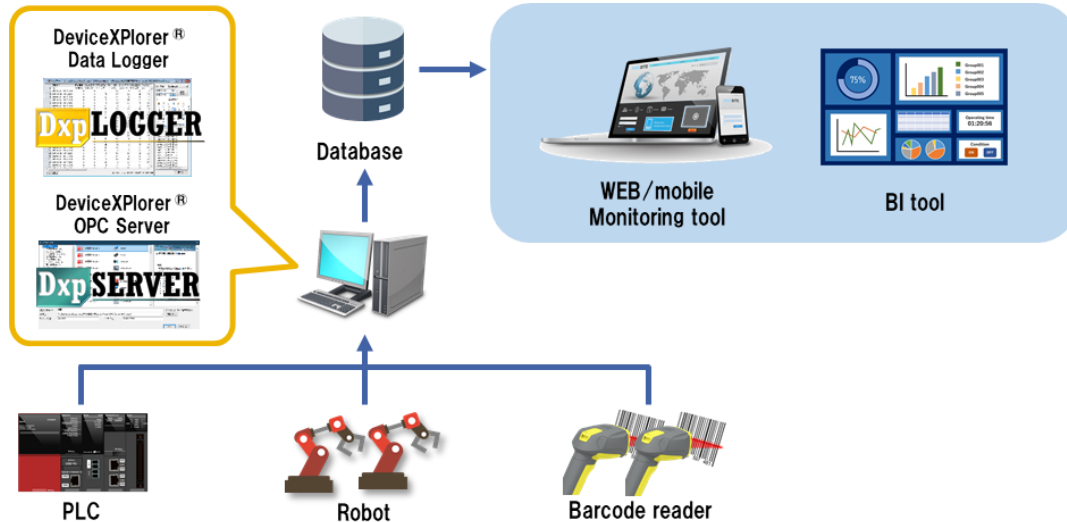
Daily_Report

Date/Time	Pressure	FlowRate A	FlowRate B	FlowRate C	FlowRate D	WaterLevel 1	WaterLevel 2
2021/04/27 10:00:00	100	20	20	20	20	20	20
2021/04/27 11:00:00	100	20	20	20	20	20	20
2021/04/27 12:00:00	100	20	20	20	20	20	20
2021/04/27 13:00:00	100	20	20	20	20	20	20
2021/04/27 14:00:00	100	20	20	20	20	20	20
2021/04/27 15:00:00	100	20	20	20	20	20	20
2021/04/27 16:00:00	100	20	20	20	20	20	20
2021/04/27 17:00:00	100	20	20	20	20	20	20
2021/04/27 18:00:00	100	20	20	20	20	20	20
2021/04/27 19:00:00	100	20	20	20	20	20	20
2021/04/27 20:00:00	100	20	20	20	20	20	20
2021/04/27 21:00:00	100	20	20	20	20	20	20
2021/04/27 22:00:00	100	20	20	20	20	20	20
2021/04/27 23:00:00	100	20	20	20	20	20	20
2021/04/28 00:00:00	100	20	20	20	20	20	20
2021/04/28 01:00:00	100	20	20	20	20	20	20
2021/04/28 02:00:00	100	20	20	20	20	20	20
2021/04/28 03:00:00	100	20	20	20	20	20	20
2021/04/28 04:00:00	100	20	20	20	20	20	20
2021/04/28 05:00:00	100	20	20	20	20	20	20
2021/04/28 06:00:00	100	20	20	20	20	20	20
2021/04/28 07:00:00	100	20	20	20	20	20	20
2021/04/28 08:00:00	100	20	20	20	20	20	20
2021/04/28 09:00:00	100	20	20	20	20	20	20
2021/04/28 10:00:00	100	20	20	20	20	20	20
2021/04/28 11:00:00	100	20	20	20	20	20	20
2021/04/28 12:00:00	100	20	20	20	20	20	20
2021/04/28 13:00:00	100	20	20	20	20	20	20
2021/04/28 14:00:00	100	20	20	20	20	20	20
2021/04/28 15:00:00	100	20	20	20	20	20	20
2021/04/28 16:00:00	100	20	20	20	20	20	20
2021/04/28 17:00:00	100	20	20	20	20	20	20
2021/04/28 18:00:00	100	20	20	20	20	20	20
2021/04/28 19:00:00	100	20	20	20	20	20	20
2021/04/28 20:00:00	100	20	20	20	20	20	20
2021/04/28 21:00:00	100	20	20	20	20	20	20
2021/04/28 22:00:00	100	20	20	20	20	20	20
2021/04/28 23:00:00	100	20	20	20	20	20	20
2021/04/29 00:00:00	100	20	20	20	20	20	20
2021/04/29 01:00:00	100	20	20	20	20	20	20
2021/04/29 02:00:00	100	20	20	20	20	20	20
2021/04/29 03:00:00	100	20	20	20	20	20	20
2021/04/29 04:00:00	100	20	20	20	20	20	20
2021/04/29 05:00:00	100	20	20	20	20	20	20
2021/04/29 06:00:00	100	20	20	20	20	20	20
2021/04/29 07:00:00	100	20	20	20	20	20	20
2021/04/29 08:00:00	100	20	20	20	20	20	20
2021/04/29 09:00:00	100	20	20	20	20	20	20
2021/04/29 10:00:00	100	20	20	20	20	20	20
2021/04/29 11:00:00	100	20	20	20	20	20	20
2021/04/29 12:00:00	100	20	20	20	20	20	20
2021/04/29 13:00:00	100	20	20	20	20	20	20
2021/04/29 14:00:00	100	20	20	20	20	20	20
2021/04/29 15:00:00	100	20	20	20	20	20	20
2021/04/29 16:00:00	100	20	20	20	20	20	20
2021/04/29 17:00:00	100	20	20	20	20	20	20
2021/04/29 18:00:00	100	20	20	20	20	20	20
2021/04/29 19:00:00	100	20	20	20	20	20	20
2021/04/29 20:00:00	100	20	20	20	20	20	20
2021/04/29 21:00:00	100	20	20	20	20	20	20
2021/04/29 22:00:00	100	20	20	20	20	20	20
2021/04/29 23:00:00	100	20	20	20	20	20	20
2021/05/01 00:00:00	100	20	20	20	20	20	20
2021/05/01 01:00:00	100	20	20	20	20	20	20
2021/05/01 02:00:00	100	20	20	20	20	20	20
2021/05/01 03:00:00	100	20	20	20	20	20	20
2021/05/01 04:00:00	100	20	20	20	20	20	20
2021/05/01 05:00:00	100	20	20	20	20	20	20
2021/05/01 06:00:00	100	20	20	20	20	20	20
2021/05/01 07:00:00	100	20	20	20	20	20	20
2021/05/01 08:00:00	100	20	20	20	20	20	20
2021/05/01 09:00:00	100	20	20	20	20	20	20
2021/05/01 10:00:00	100	20	20	20	20	20	20
2021/05/01 11:00:00	100	20	20	20	20	20	20
2021/05/01 12:00:00	100	20	20	20	20	20	20
2021/05/01 13:00:00	100	20	20	20	20	20	20
2021/05/01 14:00:00	100	20	20	20	20	20	20
2021/05/01 15:00:00	100	20	20	20	20	20	20
2021/05/01 16:00:00	100	20	20	20	20	20	20
2021/05/01 17:00:00	100	20	20	20	20	20	20
2021/05/01 18:00:00	100	20	20	20	20	20	20
2021/05/01 19:00:00	100	20	20	20	20	20	20
2021/05/01 20:00:00	100	20	20	20	20	20	20
2021/05/01 21:00:00	100	20	20	20	20	20	20
2021/05/01 22:00:00	100	20	20	20	20	20	20
2021/05/01 23:00:00	100	20	20	20	20	20	20
2021/05/02 00:00:00	100	20	20	20	20	20	20
2021/05/02 01:00:00	100	20	20	20	20	20	20
2021/05/02 02:00:00	100	20	20	20	20	20	20
2021/05/02 03:00:00	100	20	20	20	20	20	20
2021/05/02 04:00:00	100	20	20	20	20	20	20
2021/05/02 05:00:00	100	20	20	20	20	20	20
2021/05/02 06:00:00	100	20	20	20	20	20	20
2021/05/02 07:00:00	100	20	20	20	20	20	20
2021/05/02 08:00:00	100	20	20	20	20	20	20
2021/05/02 09:00:00	100	20	20	20	20	20	20
2021/05/02 10:00:00	100	20	20	20	20	20	20
2021/05/02 11:00:00	100	20	20	20	20	20	20
2021/05/02 12:00:00	100	20	20	20	20	20	20
2021/05/02 13:00:00	100	20	20	20	20	20	20
2021/05/02 14:00:00	100	20	20	20	20	20	20
2021/05/02 15:00:00	100	20	20	20	20	20	20
2021/05/02 16:00:00	100	20	20	20	20	20	20
2021/05/02 17:00:00	100	20	20	20	20	20	20
2021/05/02 18:00:00	100	20	20	20	20	20	20
2021/05/02 19:00:00	100	20	20	20	20	20	20
2021/05/02 20:00:00	100	20	20	20	20	20	20
2021/05/02 21:00:00	100	20	20	20	20	20	20
2021/05/02 22:00:00	100	20	20	20	20	20	20
2021/05/02 23:00:00	100	20	20	20	20	20	20
2021/05/03 00:00:00	100	20	20	20	20	20	20
2021/05/03 01:00:00	100	20	20	20	20	20	20
2021/05/03 02:00:00	100	20	20	20	20	20	20
2021/05/03 03:00:00	100	20	20	20	20	20	20
2021/05/03 04:00:00	100	20	20	20	20	20	20
2021/05/03 05:00:00	100	20	20	20	20	20	20
2021/05/03 06:00:00	100	20	20	20	20	20	20
2021/05/03 07:00:00	100	20	20	20	20	20	20
2021/05/03 08:00:00	100	20	20	20	20	20	20
2021/05/03 09:00:00	100	20	20	20	20	20	20
2021/05/03 10:00:00	100	20	20	20	20	20	20
2021/05/03 11:00:00	100	20	20	20	20	20	20
2021/05/03 12:00:00	100	20	20	20	20	20	20
2021/05/03 13:00:00	100	20	20	20	20	20	20
2021/05/03 14:00:00	100	20	20	20	20	20	20
2021/05/03 15:00:00	100	20	20	20	20	20	20
2021/05/03 16:00:00	100	20	20	20	20	20	20
2021/05/03 17:00:00	100	20	20	20	20	20	20
2021/05/03 18:00:00	100	20	20	20	20	20	20
2021/05/03 19:00:00	100	20	20	20	20	20	20
2021/05/03 20:00:00	100	20	20	20	20	20	20
2021/05/03 21:00:00	100	20	20	20	20	20	20
2021/05/03 22:00:00	100	20	20	20	20	20	20
2021/05/03 23:00:00	100	20	20	20	20	20	20
2021/05/04 00:00:00	100	20	20	20	20	20	20
2021/05/04 01:00:00	100	20	20	20	20	20	20
2021/05/04 02:00:00	100	20	20	20	20	20	20
2021/05/04 03:00:00	100	20	20	20	20	20	20
2021/05/04 04:00:00	100	20	20	20	20	20	20
2021/05/04 05:00:00	100	20	20	20	20	20	20

Use Cases

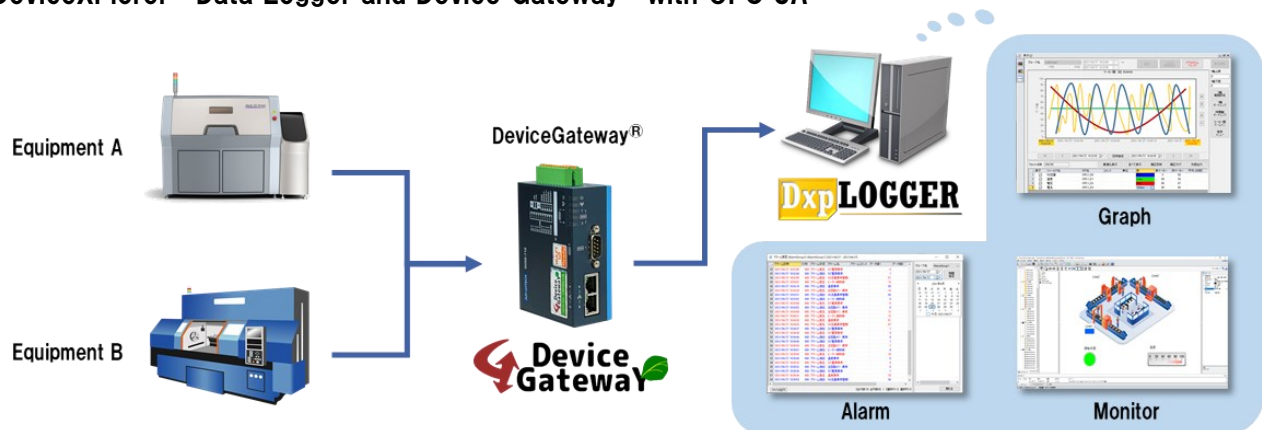
Data logging

- Combine Device XPlorer® Data Logger with Device XPlorer® OPC server to store data in the database
- Combine with BI tools for increased Visualization/Analysis of equipment.



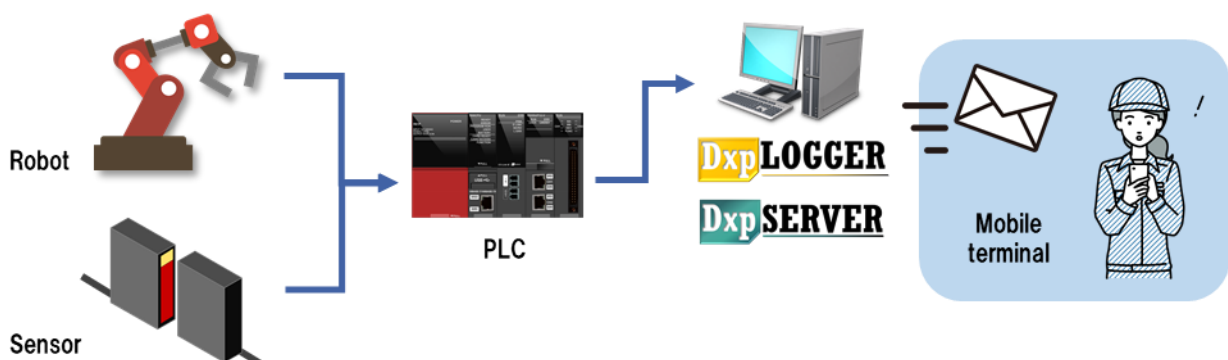
Facility monitoring

- Monitor equipment operating status in real time through monitor functions, graphs, and alarms
- Implement high security communication by connecting DeviceXplorer® Data Logger and Device Gateway® with OPC UA



Alarm and Mail functions

- List abnormal conditions through alarm summary and alarm history
- Reduce downtime with e-mail notifications when an alarm occurs/recovers



Specifications

Classification	Content
OS *1	Windows11 (22H2)*1 / Windows10 (22H2)*1 Windows10 IoT Enterprise LTSC 2021 / Windows 10 IoT Enterprise LTSC 2019 Windows Server2022/Windows Server2019/Windows Server2016
Framework	.NET Framework 4.7.2 or later
Interface	OPC DA 2.05A, OPC UA

Classification	Content
Data storage	CSV, ODBC driver compliant database (Microsoft SQL Server, Microsoft Access, Oracle Database, PostgreSQL, My SQL, Firebird etc.) Microsoft Azure SQL Database, Amazon RDS (Microsoft SQL Server, Oracle, PostgreSQL, MySQL)
Application Type *2	32bit Application (Win32/x86) , 64bit Application (Win64/x64)

*1 Due to OS updates via Windows Update, the version may be out of warranty.

*2 You can select 32bit or 64bit application installation. Please refer to the manual for details.

Features

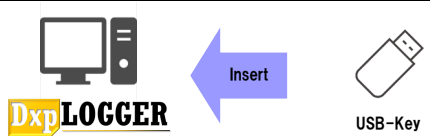

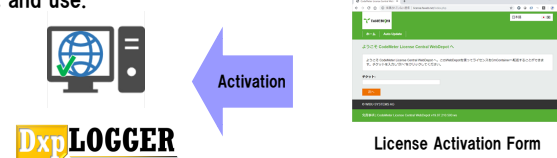


Classification	Item	Content
Standard functionality	Authority	Permission settings configuration
	Diagnostic	Execution status diagnostic, Log message output
	Connectivity	Supports 128 OPC servers
	Others	Auto logging, Running in task tray, Wizard setting
Data Logging	Logging	Periodic, event
	Interval	50ms - 24hours
	Limitation points	65,536 (512 points x 128 groups)
	Type	Binary, BCD, Float, Logarithm, String
	File format	CSV, ODBC (INSERT, UPDATE)
	Primary function	Logging for (periodic, the hour, trigger, event, relative time) handshake, split file, offline buffering, write cache, retention period, aggregation
	Calculation	Engineering, BCD, multiple rate, square root extraction, power factor, Amount of change, logarithm, string table, dead band
	Report	Daily/Monthly/Yearly (Automatic printing, XLS(X) , PDF)
Data View	Type	Spread sheet
	Display unit	By group, date
	Filter	Select Value, Specific range
Mail	Condition	Alarm occurs/recovers
	Number of settings	16 groups (1 group x 16 addresses)

Classification	Item	Content
Recipe	Processing	128 groups (Max 30,000 tags, 1,000 recipes)
Trend graph	Display type	Real-time, historical
	Number of graph	64 graphs*1
	Number of line	512 lines (10 million points)
	Type	XY plot, step chart, bar graph, area chart, semi-logarithmic graph, operation graph, pie chart, stacked bar, pareto chart
	Primary function	Optimize, Data search, Scooter bar
	Unit	Each group on date, File designation
Alarm	Export	Printing, Various export file formats (Image, CSV, XLS)
	Monitoring interval	50ms - 24hours
	Monitoring points	128K points (1,024 points x 128 groups)
	Type	Alarm summary, Alarm history
	Condition	Value range, Comparison of data
	Contents	Alarm occurrence /restoration (date and time) , Data values, Comment, Alarm level, Audio playback
Action	Execution process	Execution program, Write value, FTP
	Number of process	128 groups (1 program and 10 values writing)
	Type of write value	Heartbeat signal, Increment, Decrement, Fixed value, Date and time
Simple Monitor*2	Processing	16 groups (1 group * 128 points)

*1 Up to 64 graphs can be displayed simultaneously in a 64bit application, and up to 16 graphs can be displayed in a 32bit application.

*2 Only available in the Enterprise Edition.

License Activation Flow

Product Type	Activation Flow	
Package (Hardware Key)	Insert a Hardware Key and use. 	
Package (Software Key) or Download	Perform user registration and get an ID. 	the PC with DeviceXPlorer® Data Logger installed can connect to the Internet Activate using online PC, and use.  <p>* Only necessary during initial installation</p>
	User registration 	the PC with DeviceXPlorer® Data Logger installed cannot connect to the Internet Activate using online PC and offline PC, and use.  <p>* Only necessary during initial installation</p>

How to read the model code

DXPLOGV3 A - B - C - D

A	Edition	EP :Enterprise ST :Standard
B	Product Type	HW :Package (Hardware Key) SW :Package (Software Key) DL :Download
C	Upgrade	Unspecified :Normal product V :Version upgrade CH :Enhanced upgrade
D	Language	Unspecified :Japanese E :English

Lineup

Enterprise Edition


Product Name	Product form	Model	Remarks
DxpLOGGER V3 Enterprise	Package (Hardware Key)	DXPLOGV3EP-HW-E	Simple monitor function available
	Package (Software Key)	DXPLOGV3EP-SW-E	
	Download	DXPLOGV3EP-DL-E	
DxpLOGGER V3 Enterprise Version Upgrade *1	Package (Hardware Key)	DXPLOGV3EP-HW-V-E	Upgrade to the latest version
	Package (Software Key)	DXPLOGV3EP-SW-V-E	
	Download	DXPLOGV3EP-DL-V-E	
DxpLOGGER V3 Enterprise Enhanced upgrade	Package (Hardware Key)	DXPLOGV3EP-HW-CH-E	Upgrade to Enterprise Edition from Standard Edition.
	Package (Software Key)	DXPLOGV3EP-SW-CH-E	
	Download	DXPLOGV3EP-DL-CH-E	

Standard Edition


Product Name	Product form	Model	Remarks
DxpLOGGER V3 Standard	Package (Hardware Key)	DXPLOGV3ST-HW-E	Simple monitor function not available
	Package (Software Key)	DXPLOGV3ST-SW-E	
	Download	DXPLOGV3ST-DL-E	
DxpLOGGER V3 Standard Version Upgrade *1	Package (Hardware Key)	DXPLOGV3ST-HW-V-E	Upgrade to the latest version
	Package (Software Key)	DXPLOGV3ST-SW-V-E	
	Download	DXPLOGV3ST-DL-V-E	

*1 At the time of minor version upgrade, each product can be upgraded free of charge by applying a patch.
However, if you have purchased the package version, you can upgrade free of charge only once within 18 months after purchase.
Please purchase the upgraded product each time after 18 months or more.
Minor upgrades are for upgrades after the decimal point, such as Ver3.0 to Ver3.1.
Major upgrades, such as Ver2.x to Ver3.x. In this case, please purchase an upgraded version.



Related Products



DeviceXplorer® OPC Server
Industrial Communication Platform



DeviceGateway®
Data Access Unit for IoT

 **TAKEBISHI** TAKEBISHI CORPORATION
29, Mamedacho, Nishikyogoku, Ukyo-Ku, Kyoto, 615-8501, Japan

Support Desk

+81-75-325-2261 Available: Weekday:9:00-17:00
(Japan local time)

HP: <https://www.faweb.net/en/>

YouTube: https://www.youtube.com/@faweb_en



Company names and trademarks mentioned herein are trademarks or registered trademarks of the respective companies.
The information in this document is subject to change without notice.