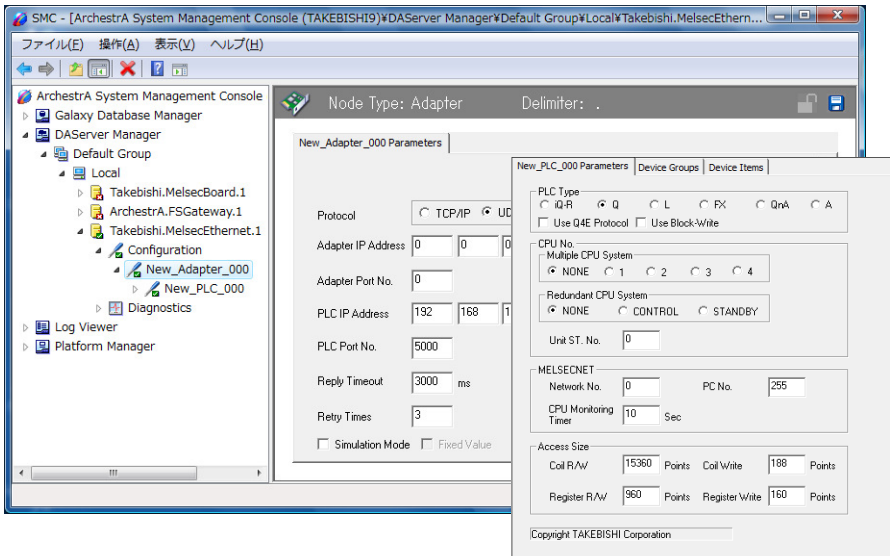


Compatible with Wonderware ArchestrA DAServer Software



DAServer is a communication middleware which corresponds with “ArchestrA” that is the architecture of Wonderware. DAServer supports DDE/SuiteLink protocol as I/O Server, moreover DAServer corresponds with “OPC” that is standard interface specification for PLC communication between applications in the manufacturing industry. DAServer realizes seamless system construction. This is because DAServer makes ArchestrA organize the setting and diagnosis information.

DAServer Device Integration

Changing configuration during communication!

Hot configuration

DAServer reflects changes of communication parameter automatically without stopping client applications. It enable to maintain the communication environment while operating, by means of perfectly separating communication from

Remote maintenance!

Remote configuration

When a DAServer is installed in PC which works on LAN, setting changes and RAS diagnoses of the DAServer can be activated remotely. From office, remote maintenance of PCs installed in each place can be performed while distribution systems are being constructed.

Corresponded with “OPC” which communicate between applications.

Corresponded with SuiteLink / DDE / FastDDE / OPC

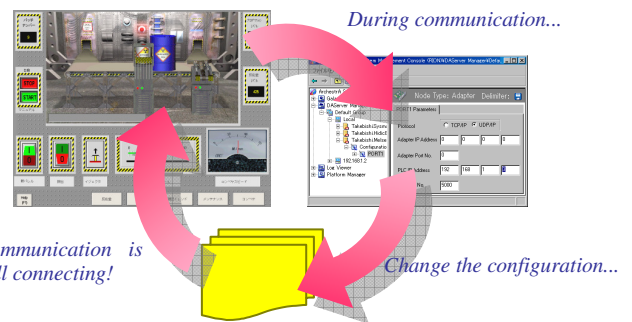
As a matter of course, DAServer corresponds with DDE/FastDDE. And it is also comatible with SuiteLink which offers high throughput, moreover OPC,namely defacto standard. DAServer offers appropriate data access for client applications in any case.

Speedy tracing for finding factor of trouble!

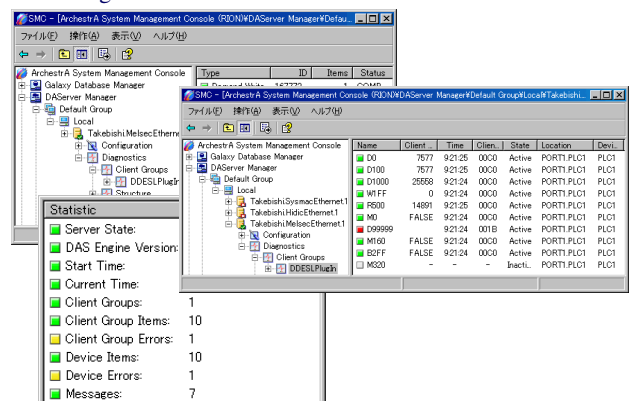
Various RAS functions

Various information—such as server information, communication information, current value and quality indicator can be monitored from SMC(System Management Console). Write transaction history will be stored automatically so that it makes easier to find factor of trouble.

Hot configuration



RAS diagnosis



Compatible with Wonderware Archestra DAServer Software



[Price List]

| Product | Model | Support | Price |
|--------------------------|-----------|--|---------|
| MELSEC Ethernet DAServer | QE71DAS-E | MITSUBISHI MELSEC iQ-R/Q/QnA/A Series Ethernet | USD 780 |
| MELSEC Serial DAServer | QC24DAS-E | MITSUBISHI MELSEC-Q/QnA/A/FX Series Serial | |
| MELSEC PCBoard DAServer | Q8BDAS-E | MITSUBISHI MELSEC PCI Board | |
| SYSMAC Ethernet DAServer | SYSDAS-E | OMRON SYSMAC-CJ/CS/CV Series Ethernet | |
| FA-M3 Ethernet DAServer | FAMDAS-E | YOKOGAWA FA-M3(R) Ethernet | |
| HIDIC Ethernet DAServer | HIDAS-E | HITACHI HIDIC-EH(V)/H Series Ethernet | |

[Field Devices]

| Vendor | Series | CPU | Ethernet | Serial | Others |
|----------------|-------------|---|--|--|---|
| MITSUBISHI | MELSEC iQ-R | R04CPU, R08CPU, R16CPU R32CPU, R120CPU | RJ71EN71 | | |
| | MELSEC Q | Q00(U)(J)CPU, Q01(U)CPU Q02(U/H/PH)CPU Q03UD(E)CPU, Q04UD(E)HCPU Q06(P)HCPU, Q06UD(E)HCPU Q12(P/PR)HCPU, Q25(P/PR)HCPU Q13UD(E)HCPU, Q26UD(E)HCPU Q10UD(E)HCPU, Q20UD(E)HCPU Q50UDEHCPU, Q100UDEHCPU Q03UDVPCPU, Q04UD(P)VPCPU Q06UD(P)VPCPU, Q13UD(P)VPCPU Q26UD(P)VPCPU | QJ71E71-100 QJ71E71-B2 QJ71E71-B5 | QJ71C24N QJ71C24N-R2 QJ71C24N-R4 | Q81BD-J71GP21(S)-SX Q81BD-J71LP21-25 Q81BD-J61BT11 Q80BD-J71GP21(S)-SX Q80BD-J71LP21(S)-25 Q80BD-J71LP21G Q80BD-J71BR11 Q80BD-J61BT11N |
| | MELSEC L | L02/06CPU-(P), L26CPU-(P)BT | LJ71QE71 | | |
| | MELSEC QnA | Q2A(S/SH)CPU(-S1) Q3ACPU Q4A(R)CPU | A(1S)J71QE71(N/N3)(-T/-B2/-B5) | AJ71QC24(N)(-R2/-R4) A1SJ71QC24(N)(-R2) | A70BD-J71QLP23(G/GE) A70BD-J71QLR23 A70BD-J71QBR(11/13) |
| | MELSEC A | A1(N)(S/SH)CPU A2(N/A/U)(S)CPU(-S1) A3(N/A/U)CPU, A4UCPU | AJ71E71(-S3) A(1S)J71E71(N/N3)(-T/-B2/-B5) | AJ71C24-S8 A(1S)J71UC24 | A70BD-AF A80BD-A2USH-S1 A80BD-J61BT(11/13) |
| | MELSEC FX | FX0(S/N), FX1(S/N/NC) FX2(N/2NC/2C), FX3(S/U/UC/G/GC) FX5U(C) | FX3U-ENET(-L) FX3U-ENET-ADP Build in Ethernet port | FXxx-(232/485)-BD FXxx-(232/485)-ADP | |
| OMRON | SYSMAC-CJ | CJ1G, CJ1H, CJ1M, CJ2, CJ2H, CJ2M, NSJ | CJ1W-ETN11/21 | | |
| | SYSMAC-CS | CS1G, CS1H | CS1W-ETN21/11/01 | | |
| | SYSMAC-CP | CP1H | CP1W-CIF41 CJ1W-ETN21/11 | | |
| | SYSMAC-CV | CVM1(D), CV500/1000/2000 | CV500-ETN01 | | |
| | SYSMAC-C | C200/1000/2000H, CQM1(H), CPM1/2 | | | |
| SYSMAC One NSJ | NSJ | NSJW-ETN21 | | | |
| YOKOGAWA | FA-M3V/M3R | F3SP71-4S/N, F3SP76-7S/N, F3SP | F3LE12-0T, F3LE11-0T, F3LE01-0T | | |
| HITACHI | EH150-EHV | EHV-CPU16/32/64/128 | EH-ETH(2) Build in Ethernet port | | |
| | EH150 | EH-CPU104A/208A/316A/516/548 | EH-ETH(2) | | |
| | H | H-1002/2002/4010, H-252/302/702 | LAN-ETH(2) | | |

[Specification]

| Item | Description |
|-------------------|---|
| Support OS | Windows 10 / 8.1 / 7 / Vista / WindowsServer 2016 / 2012(R2) / 2008(R2) |
| Support W.W. | DAServer is used with Wonderware InTouch 8 or later, Historian 8.0 or later. |
| Maximum PLCs | 62 |
| Support Interface | DDE, SuiteLink, OPC-DA2.05A |
| Maximum Tags | Unlimited |

| Item | Description |
|--------------------|--|
| Data Type | VT_BOOL, VT_I2, VT_UI2, VT_I4, VT_R4, VT_BSTR |
| Expansion Format | Boolean, Floating, String 16bit signed integer, 16bit unsigned integer 32bit signed integer, 16bit BCD, 32bit BCD Register bit position specification Text-format decimal, Text-format hexadecimal |
| Service Activation | Enable |



TAKEBISHI Corporation

Kyoto Head Office
29 Mamedacho Nishikyogoku Ukyoku Kyoto 615-8501, JAPAN

Support Dial

+81-75-325-2261
fa-support@takebishi.co.jp

Available:
Weekday:9:00-17:00



All of the above products and any other trademarks are under the trademarks of their respective manufactures.

The contents will be changed without notice in the future.

Sep. 2018