

(Software Key Activate screen)

### 3.4.9 A Case of Using a Hardware Key in a Virtual Environment

This section describes the procedure for using a hardware key license on an DeviceXPlorer in a virtual environment.

\*Example environment

Build a virtual environment (guest OS) in an environment with a USB port (host OS).

Install DeviceXPlorer in the virtual environment and activate using the hardware key.

The guest OS cannot use the host OS USB port.

(1) Install “CodeMeter Control Center” on the host OS.

CodeMeter Control Center must be installed, execute the following file included in the CD.

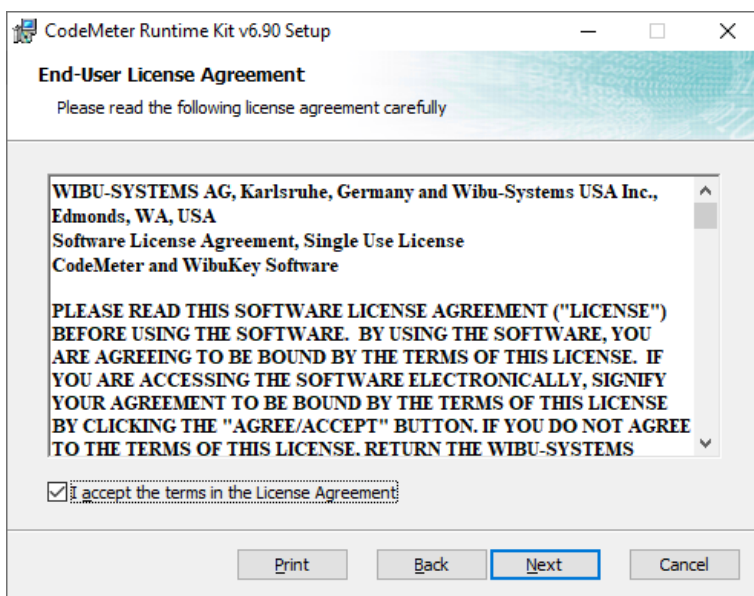
CodeMeter Control Center installation file path

Installation disk¥Option¥CodeMeterRuntime.exe

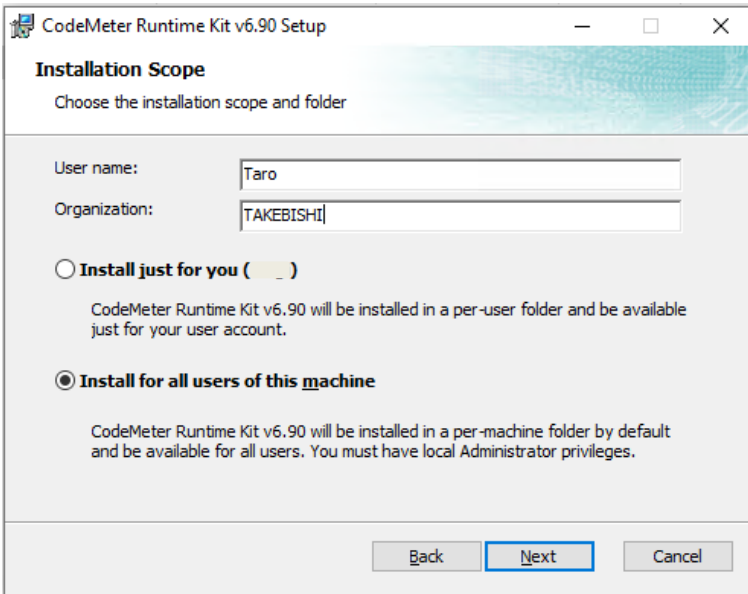
(2) Click “Next



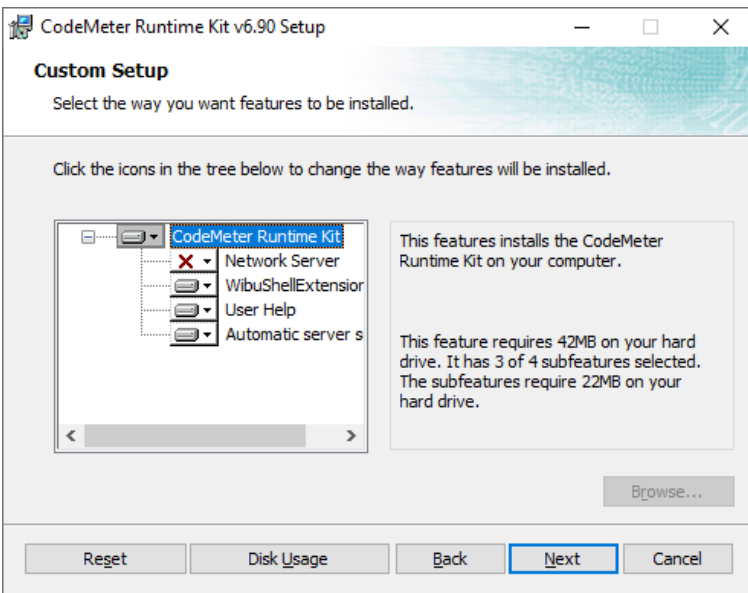
(3) Check “I accept the terms in the License Agreement”, and click “Next”.



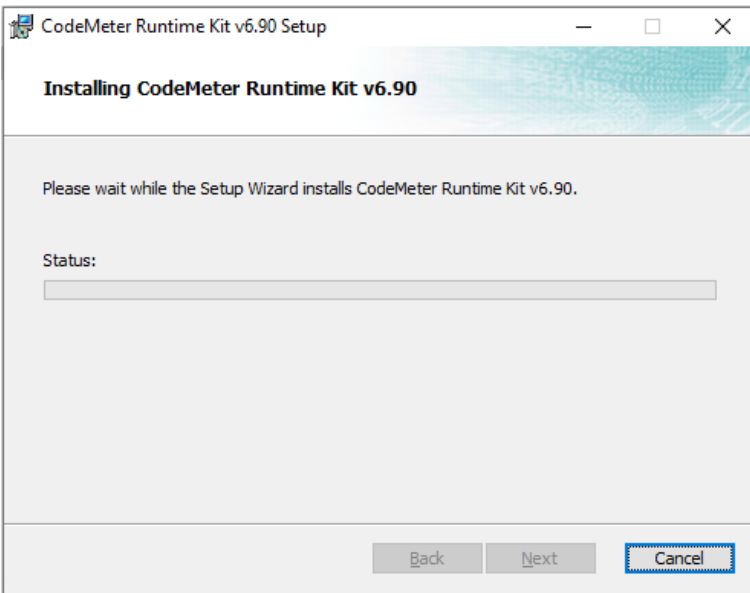
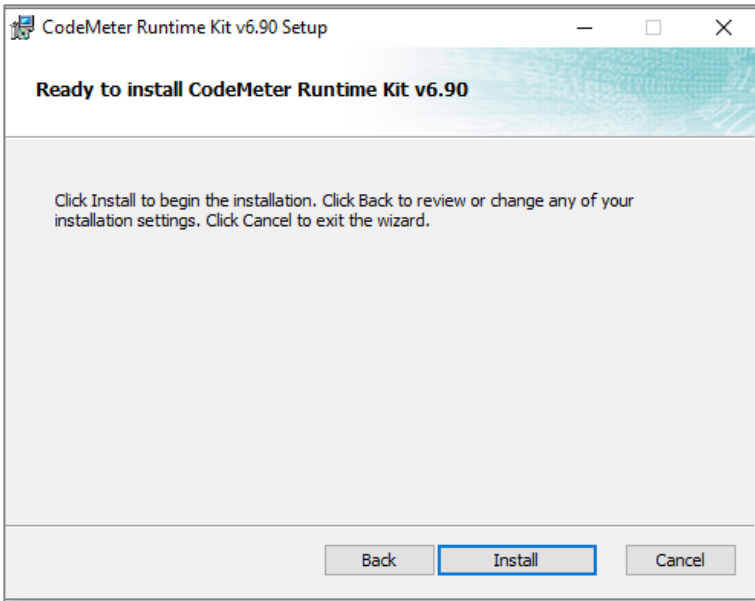
(4) Input the user information, select the appropriate item, and click “Next”.



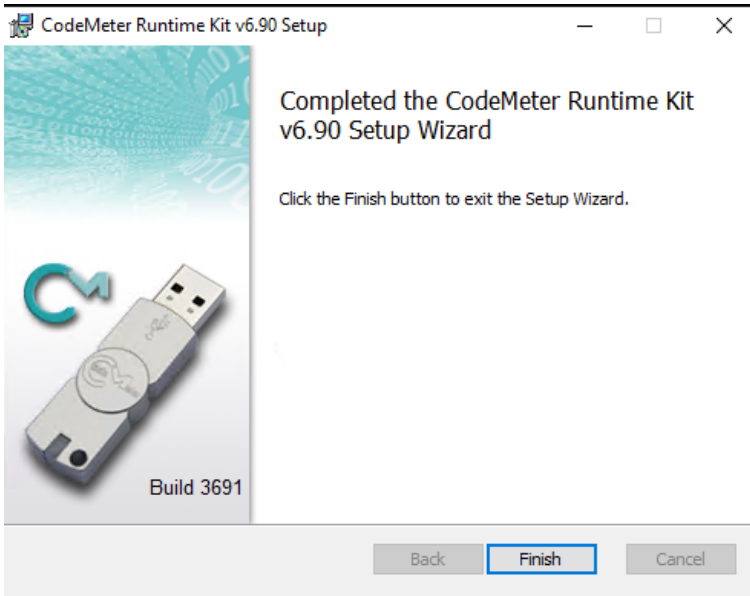
(5) Click “Next”.



(6) Click "Install".



(7) the installation is complete, the following screen will be displayed. Click "Finish".

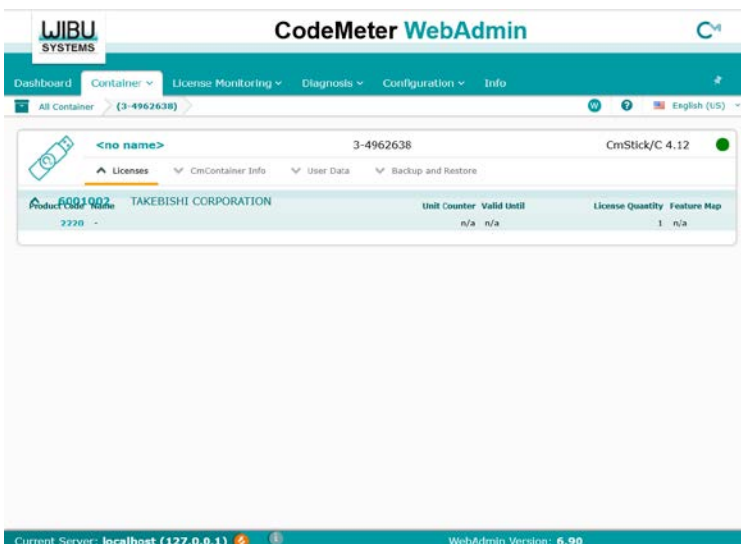
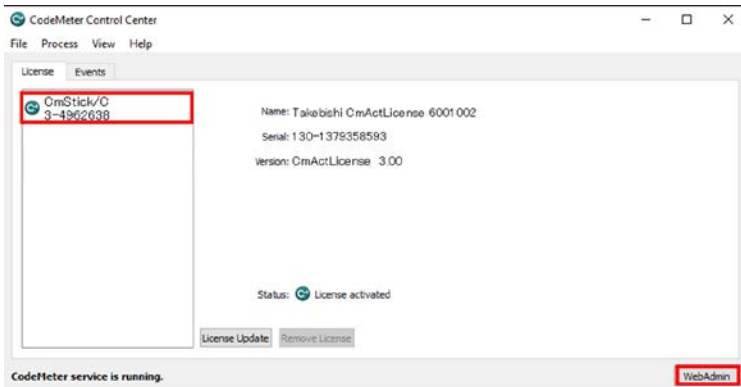


(8) The setup of "CodeMeter Control Center" is completed, it is stored in the following file path.

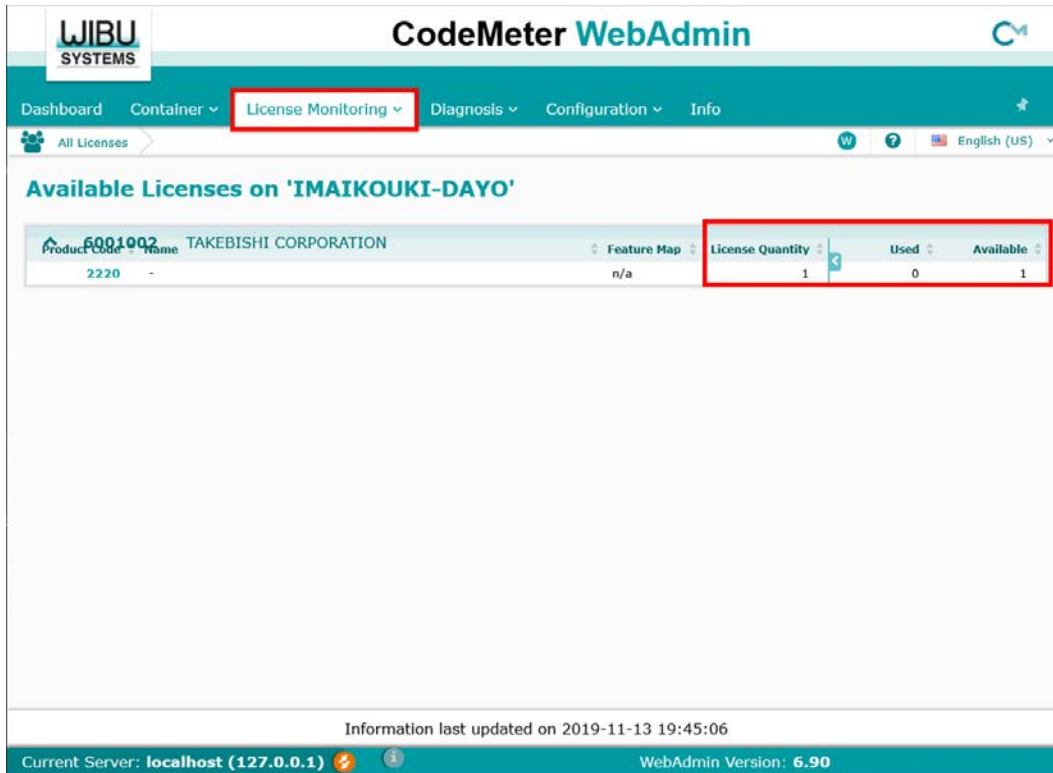
"CodeMeter Control Center" storage file path

C:\Program Files (x86)\CodeMeter\Runtime\bin\CodeMeterCC.exe

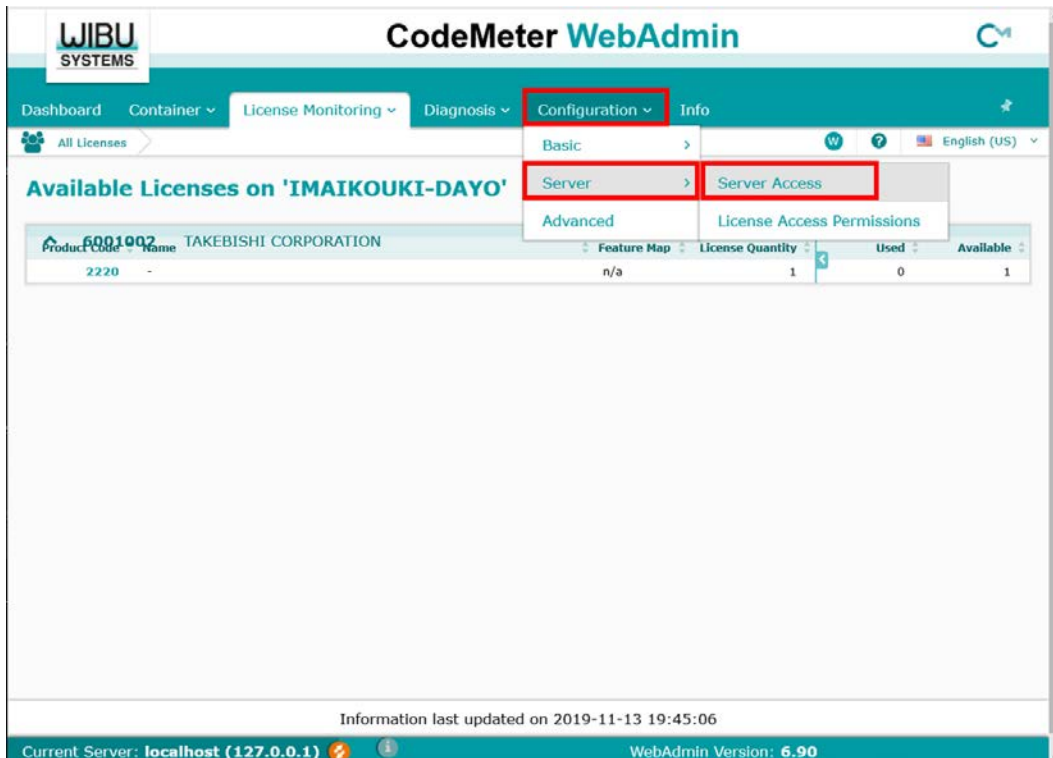
Boot "CodeMeter Control Center" and click "WebAdmin" to open "CodeMeter WebAdmin".



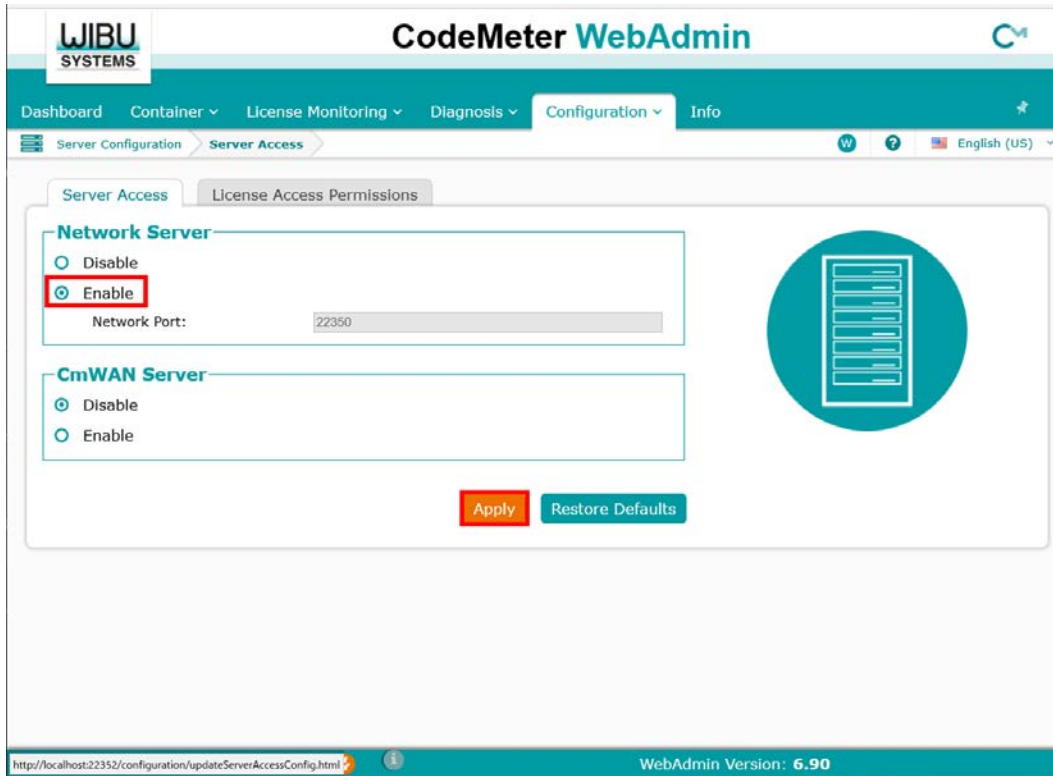
(9) Click “License Monitoring” on “CodeMeter WebAdmin” and confirm that the hardware key license is available.



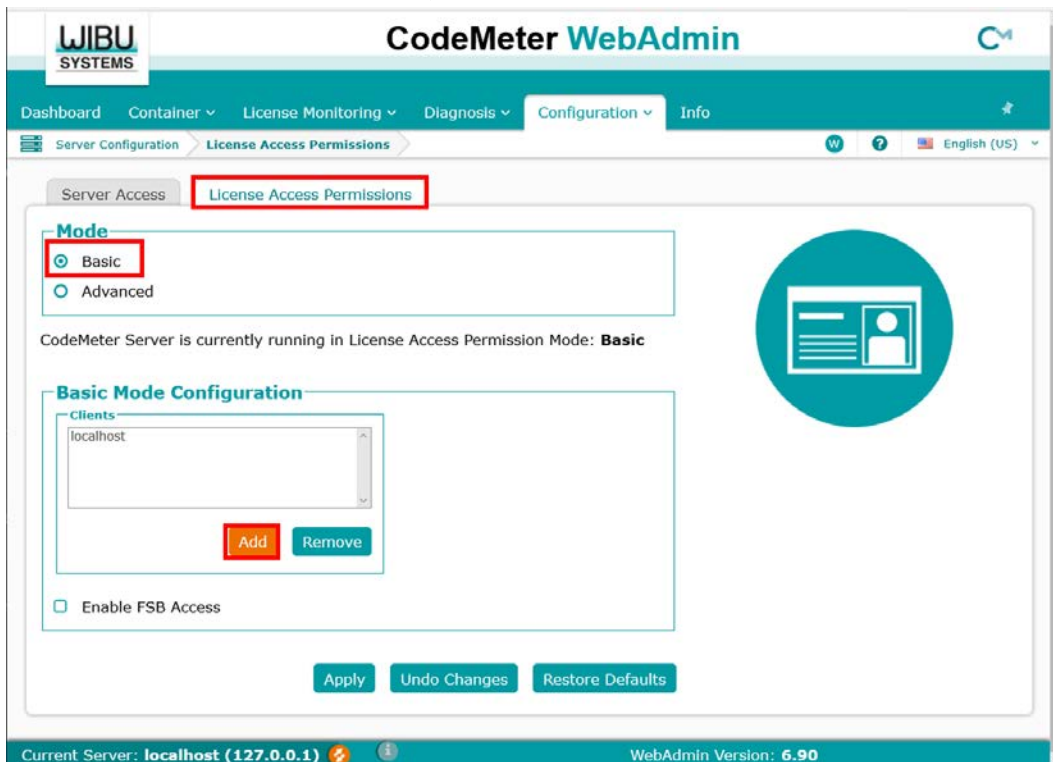
(10) Move the cursor to the setting and click “Server”> “Server Access”.



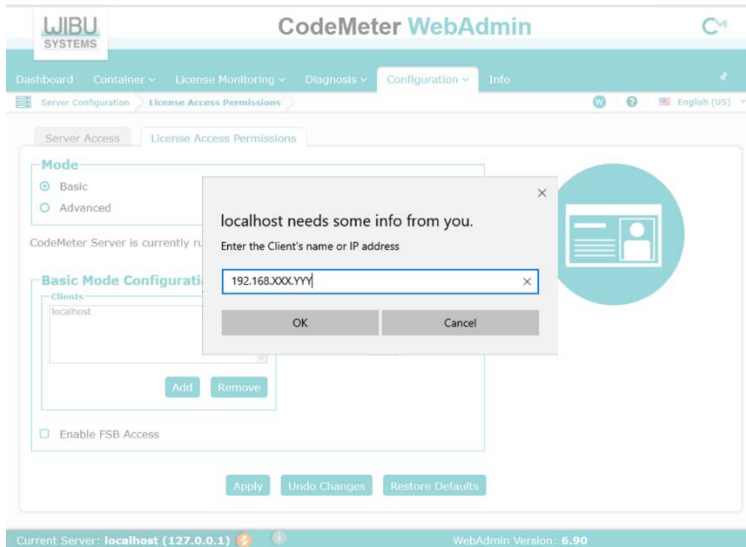
(11) “Server Access” screen appears. Check “Enable” for “Network Server” and click “Apply”.



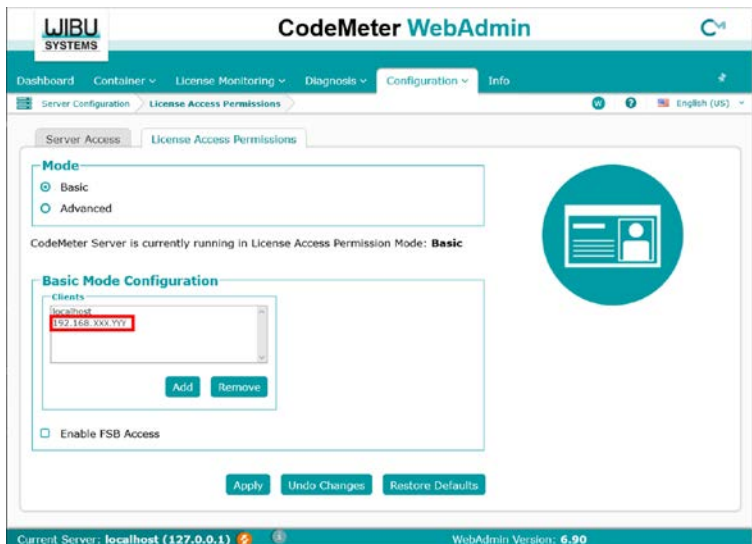
(12) Click “License Access Permission”, then click “Basic” in “Mode” and “Add” in “Basic Mode Configuration”.



(13) Input the IP address assigned to the guest OS.



(14) Confirm that the IP address of the guest OS entered in “Client” of “Basic Mode Configuration” has been added, and click “Apply”. (This procedure adds a PC that can access the license with the hardware key.)



**Important**  
 Be sure to set the license access permission. (Guest OS IP specification)  
 Otherwise, the license assigned to the hardware key may be used from an unintended DeviceXplorer on the network..

(15) Open the DeviceXplorer on the guest OS and confirm that the license has been used.

