

Data linkage software between production facilities and host systems

# OPC Spider

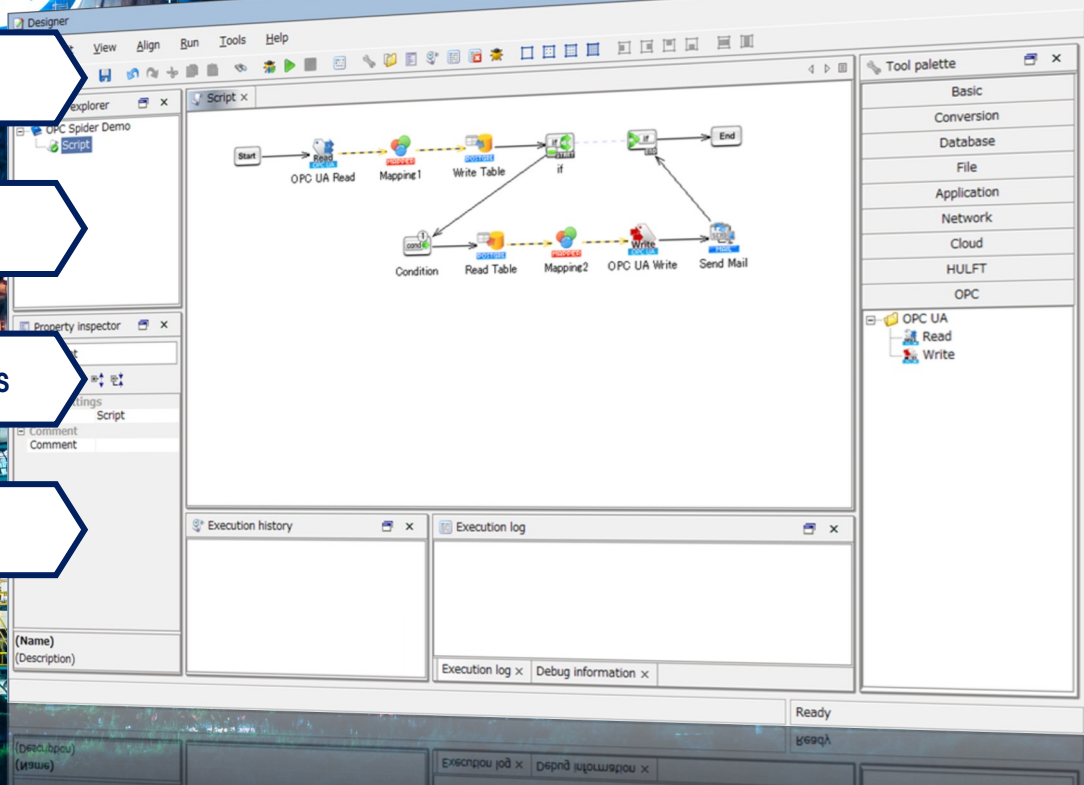


**OPC UA Supported**

**No programming required**

**Reduce development costs**

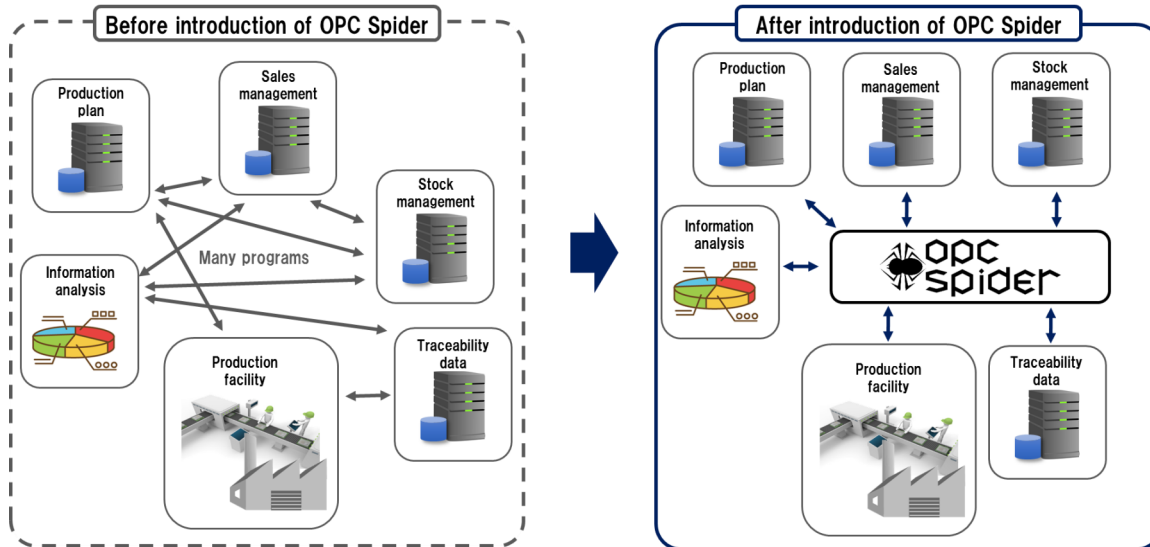
**Reduce handoffs**



# Data linkage between a production facility and a host system with only a few clicks

## Overview

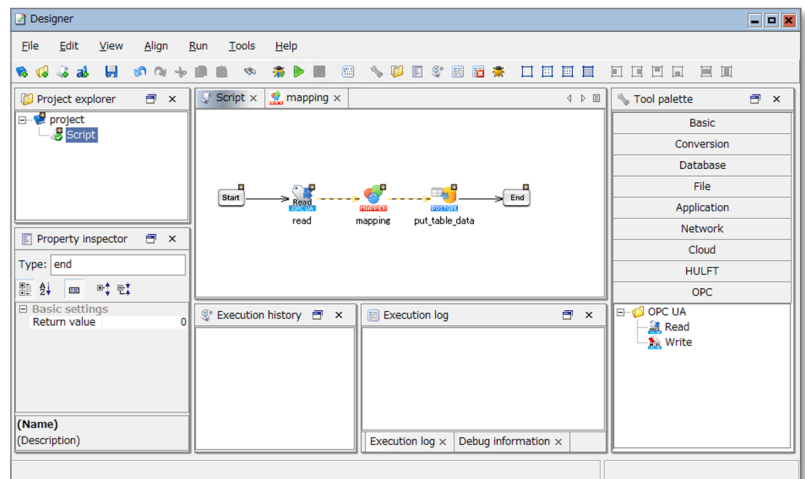
Utilized as a data linkage hub to shorten the development term and reduce costs.



## Features

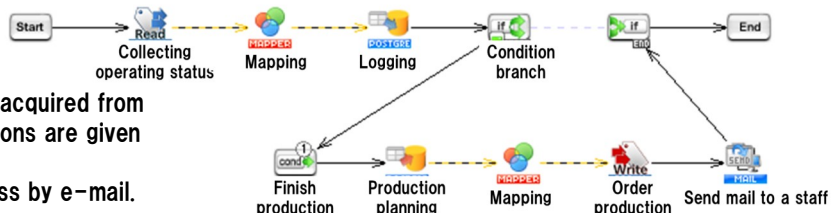
### No programming required

- ◆ Includes adapters and conversion processing for various input / output types.
- ◆ Also includes various triggers for execution.
- ◆ Drag and drop the icon of the adapter, create a data linkage process, and set a trigger.
- ◆ Data linkage process will execute when the trigger condition has been fulfilled.



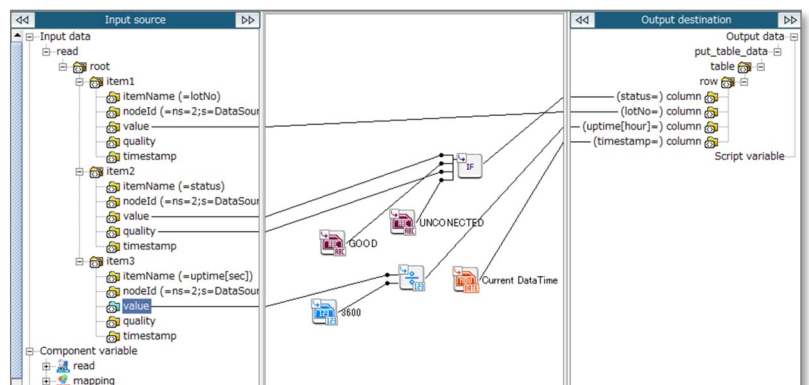
Possible with up to 10 icons!

- Operating status of the production facility is logged in a database.
- After production is completed, the next plan is acquired from the database and the next production instructions are given to the facility.
- The administrator can be notified of the progress by e-mail.



### Easy mapping

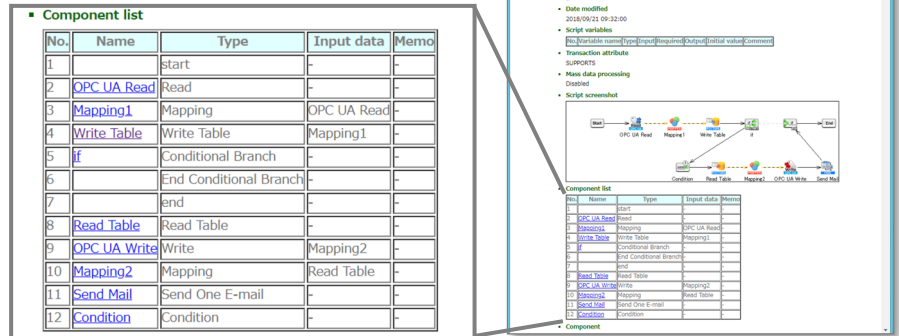
If you want to connect different types of data to each other, you can convert the data to a common format and handle it as if it were the same kind of data by using the built-in GUI mapping tool.





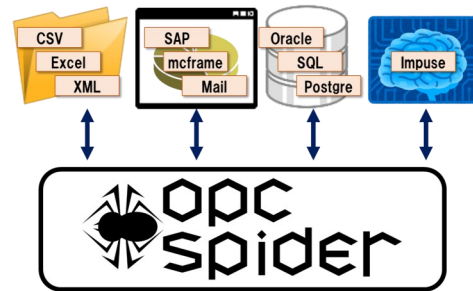
## Auto-creation of specifications

- ◇ Able to output specifications from a created script.
- ◇ Able to check and hand off processed data with ease.



## Rich connectivity

- ◇ Includes several adapters for connectivity with various applications (OPC UA, various file types, databases, BI tools, cloud, etc).
- ◇ OPC Spider can act as a data linking hub.

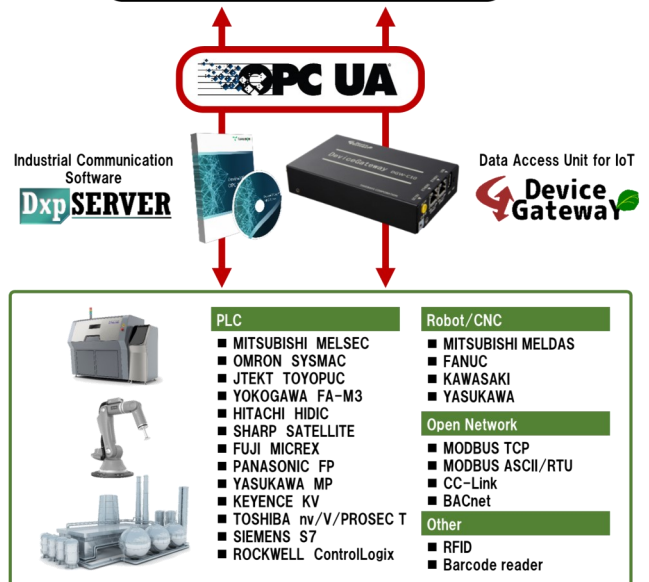


## OPC UA Compatibility

- ◇ Supported by OPC UA which is the de-facto standard for data exchange in the industrial field.

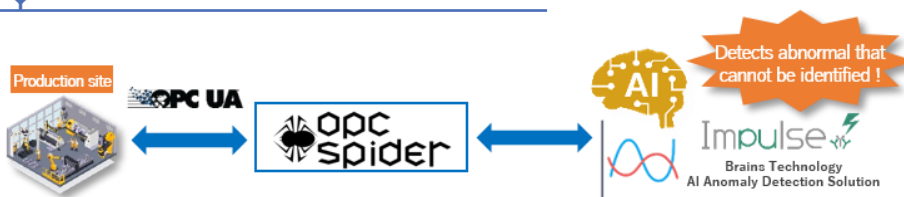
### <Supported OPC UA Profiles>

- Data Access
  - Read / Write
- Historical Access
  - Read



※ For details about our OPC products, please refer to the "DeviceXplorer OPC Server, and "DeviceGateway" product catalogs.

## AI Solution (Impulse Linkage)



OPC Spider's Impulse Adapter can be used to link with Brains Technology's "Impulse" anomaly detection system. OPC Spider can send equipment data, retrieve inference results, and feed them back to the equipment, enabling the linkage of production line operating data to the AI platform to improve productivity.

# Package line-up

Product Name	Model Code *1	Number of runtime	Number of client	Adapter																				Trigger						
				OPC UA	CSV	File operation	REST	HULFT	mframe SIGNAL CHAIN	Impulse	JDBC	Oracle	Microsoft SQL Server	PostgreSQL	MySQL	MongoDB	XML	Microsoft Excel	FTP	Mail	Variable-length	HCL Domino	Microsoft Azure	SAP	Schedule	Application	HULFT Script	File	FTP	
Package																														
OPC Spider	OPCSP(-S)-E	1	2	●	●	●	●	●	●	●	○ <sup>2</sup>	○ <sup>2</sup>	○ <sup>2</sup>	○ <sup>2</sup>	○ <sup>2</sup>	○ <sup>2</sup>								●	●	●				
Optional Adapter																														
JDBC	OPCSP-ADP-JDBC(-S)-E										●																			
Oracle	OPCSP-ADP-ORAC(-S)-E											●																		
Microsoft SQL Server	OPCSP-ADP-MSSQ(-S)-E												●																	
PostgreSQL	OPCSP-ADP-POSG(-S)-E													●																
MySQL	OPCSP-ADP-MYSQ(-S)-E														●															
MongoDB	OPCSP-ADP-MONG(-S)-E															●														
XML	OPCSP-ADP-XMLF(-S)-E																●													
Microsoft Excel	OPCSP-ADP-MEXL(-S)-E																	●												
FTP	OPCSP-ADP-FTPC(-S)-E																		●											
Mail	OPCSP-ADP-MAIL(-S)-E																			●										
Variable-Length	OPCSP-ADP-YARL(-S)-E																				●									
IBM Domino	OPCSP-ADP-IDMN(-S)-E																					●								
Microsoft Azure	OPCSP-ADP-MAZR(-S)-E																						●							
SAP *3	OPCSP-ADP-SAPA(-S)-E																							●						
Optional Trigger																														
File	OPCSP-TRG-FILE(-S)-E																										●			
FTP	OPCSP-TRG-FTPS(-S)-E																											●		

\*1: For subscription version, please add "-S" in the model code as shown in the table.

\*2: Select one. The second or more can be added as an option.

\*3: There are restrictions on supported platforms. Please contact us for more details.

\* For perpetual license version, an annual support fee (20% of the license price) is required from the time of purchase.

\* For subscription version, support fee is included.

## Operating environment

### Runtime

Support OS		Microsoft Windows Server 2016 / 2019 Essentials/Standard/Datacenter (x64) Red Hat Enterprise Linux Server 5.5+ (x86, x64) / 6.x (x86, x64) / 7.x (x64) CentOS 6.x (x86, x64) / 7.x (x64) Oracle Linux 6.x (x86, x64) / 7.x (x64) Amazon Linux 2
HDD		2GB or more free space
Memory	Windows/Linux x86	512MB or more
	Windows/Linux x64	1GB or more

### Development Client

Support OS		Microsoft Windows Server 2016 / 2019 Essentials/Standard/Datacenter (x64) Microsoft Windows 10 Pro/Enterprise (x86, x64)
HDD		1GB or more free space
Memory	Windows/Linux x86	512MB or more

## Adapter supported version

MySQL	8.0 / 5.7
Oracle	19c
	Oracle Cloud Infrastructure Database 19c Oracle Database Cloud Service
PostgreSQL	12 / 11 / 10 / 9.6
Microsoft SQL Server	2019 / 2017 / 2016 / 2014
MongoDB	3.2
Microsoft Excel	2019 / 2016



29, Mamedacho, Nishikyogoku, Ukyo-Ku, Kyoto,  
615-8501, Japan  
TEL +81-75-325-2261  
FAX +81-75-325-2273

### Support Desk

fa-support@takebishi.co.jp

Availability:  
Weekdays: 9:00-17:00  
Japan local time

