

Industrial Communication Platform
DeviceXplorer OPC Server

Dxp SERVER

The best OPC Server for connecting devices and IT Systems

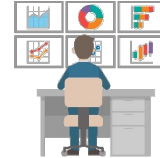
Data Collection



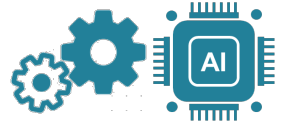
Visualization



Analysis



Optimization



ON-PREMISE



CLOUD

SCADA · MES

IT System



HTTP  MQTT

Dxp SERVER

400+ devices
connectivity

Vendor-specific
Protocols

Open Standard
Protocols



Factory



Building



Infrastructure

High Performance

Provides the fastest performance in the OPC server industry and can handle many devices.

Connectivity

Supports communication with 100+ vendors and 400+ series of devices in vendor-specific protocols.

High Reliability

Over 25 years of experience and more than 45,000 licenses shipped worldwide.

Try it now !



TAKEBISHI provides a wide variety of OPC products and solutions world-wide for over 25 years. **DeviceXplorer OPC Server** is an OPC Server which provides a wide range of connectivity between devices and applications. It works as an industrial communication platform with high-performance communication and advanced features. It is officially certified by OPC Foundation.

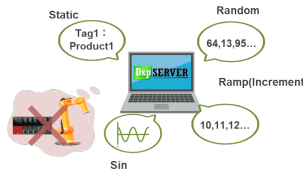




Features



- ❑ Easy configuration
Connect to devices in just 3 steps
- ❑ Communication diagnostics
- ❑ Simulated data
- ❑ Tag data bridge
- ❑ Scripting (Lua language)
- ❑ Configuration converters from other OPC servers



PLC1



PLC2

```

1  -- Check the open result
2  if (f == nil) then
3    Dxp.LogErrorMessage("File Open Error (" .. msg .. ")")
4    return
5  end
6
7  -- Make CSV
8  local text = ""
9  text = text .. Dxp.GetCurrentTime() .. Format("%Y-%m-%d %H:%M:%S") .. "\n"
10 text = text .. "Tag001" .. ToStringValue(x) .. "\n"
11 text = text .. "Tag002" .. ToStringValue(y) .. "\n"
12 text = text .. "Tag003" .. ToStringValue(z) .. "\n"
13
14 -- Write to file
15 f:write(text .. "\n")
16
17 -- Close the file
18 f:close()
19
20 -- Dump log
21 Dxp.LogMessage(text)
22
23

```



Cyclic or Event-driven



Device Connectivity

100+ vendors, 400+ series of devices



Type	Description
PLC	Mitsubishi MELSEC, Rockwell AB, Siemens S7, GE PLC, Omron SYSMAC, Jtekt TOYOPUC, Yokogawa FA-M3, Fuji MICREX, Panasonic FP, Yaskawa MP, Keyence KV, Toshiba V, Sharp SATELLITE, Azbil CPL, IAI Controller, Lsis XGT, 3S CoDeSys, Delta PLC, etc.
NC, Robot, Machine Tool	Fanuc CNC(Focas1/2, DPRNT), Mitsubishi CNC, Mitsubishi EDM, Kawasaki Robot, Yaskawa Robot, Yamaha Robot, Shibaura Machine, SHI - Molding Machine, JSW - Molding Machine, DPRNT, Mazak INTEGREX, Sanyo Denki SANMOTION, Wago Remote I/O, etc.
Open Network	MTConnect, MODBUS/TCP, MODBUS/RTU, OPC DA Client, OPC UA Client, EtherNet/IP, BACnet/IP, IEC61850 MMS, DNP3.0, IEC60870-5-104, ODBC Database, Shared Memory, etc.



PLC



NC/CNC



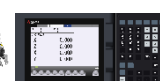
Robot



Machine Tool



Measuring Instrument



Open Standard Network



Specifications



Item	Description
OS	Windows 11 / 10 / Windows Server 2022 / 2019 / 2016 / 2012R2
Supported Server Interfaces	OPC UA 1.04 (Data Access, Historical Access, Alarm and Condition) OPC DA 3.0/2.05A, OPC AE 1.10, MODBUS/TCP, HTTP, MQTT
Device Connections	Maximum 255 devices, Unlimited number of tags
Interface Connections	Maximum 50 sessions for OPC UA, Unlimited clients for OPC DA



TAKEBISHI CORPORATION

29, Mamedacho, Nishikyogoku,
Ukyo-ku, Kyoto, 615-8501, Japan
HP: www.takebishi.co.jp/english/
Product Page: www.faweb.net/en/
Mail: fa-support@takebishi.co.jp
Contact: www.faweb.net/en/support/form/

