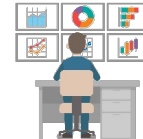


IIoT Gateway for OT/IT Convergence

Data Collection Visualization



Remote Maintenance



Analysis Optimization



SCADA / MES / Custom Applications

BI Tool / Dashboard / AI



IIoT Ready

Retrofit

Custom Logic

No Code

Over 320 device series from more than 80 vendors

Vendor-specific Protocols

Open Standard Protocols



Factory / Plant

Facility

Infrastructure

Device Connectivity
 Supports communication with 320+ device series from 80+ vendors using vendor-specific protocols.

IIoT Ready
 Supports several IIoT interfaces, including OPC UA, MQTT, and HTTP. Easy integration with your system.

Multi Platform
 Runs as a Docker container on various distributions of Linux as well as Windows.



Features



- Easy Configuration (Web UI)
- Communication Diagnostics
- Data Simulation
- Data Buffering
- Alarm Handling
- User Authentication
- File Operation
- Firewall

Custom Logic

Trigger
- Cycle
- Time
- Value Change
- Alarm Report
- MQTT Subscribe
- BLE Receive
etc.

Action
- Read / Write Value
- File Operation
- Send Email
- Process Value
- MQTT Publish
- HTTP Request
etc.

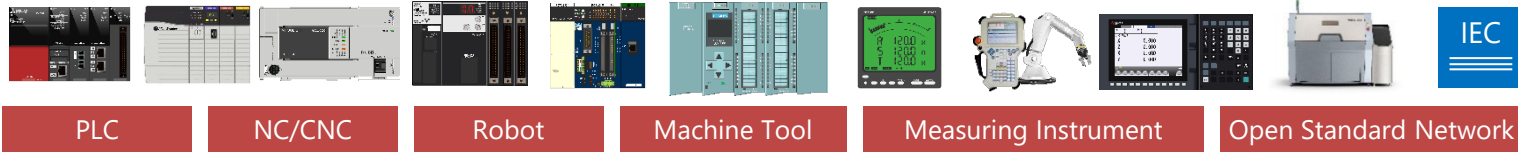


Device Connectivity

320+ device series from 80+ vendors



Type	Description
PLC	Mitsubishi MELSEC, Rockwell AB, Siemens S7, GE PLC, Omron SYSMAC, Jtekt TOYOPUC, Yokogawa FA-M3, Fuji MICREX, Panasonic FP, Yaskawa MP, Keyence KV, Toshiba V, Sharp SATELLITE, Azbil CPL, IAI Controller, 3S CoDeSys, Delta PLC, INOVANCE PLC, etc.
NC, Robot, Machine Tool	Fanuc CNC(DPRNT), Mitsubishi CNC, Mitsubishi EDM, Mitsubishi Robot, Yamaha Robot, Shibaura Machine, DPRNT, Mazak INTEGREGEX, Sanyo Denki SANMOTION, Wago Remote I/O, etc.
Open Network	MTConnect, MODBUS/TCP, MODBUS/RTU, EtherNet/IP, BACnet/IP, IEC61850 MMS, DNP3.0, Shared Memory, Bluetooth Beacon, User-Configurable Driver, etc.



Product Lineup



Hardware Model

Lineup	Description
Compact Model DGW-C10	- 8 Devices / 8,192 Tags in Total - 2 Ethernet and 1 Serial (RS232C) - 100-240VAC
Global Model DGW-W710	- 8 Devices / 8,192 Tags in Total - 2 Ethernet and 3 Serial (RS232C x1, R485 x2) - DI 4ch / DO 4ch - 24 VDC

Docker Container

Lineup	Description
Basic Model	- 1 Device / 1,024 Tags in Total
Normal Model	- 16 Devices / 8,192 Tags in Total
High Spec Model	- 64 Devices / 65,536 Tags in Total



TAKEBISHI CORPORATION
 29, Mamedacho, Nishiyogoku, Ukyo-ku,
 Kyoto, 615-8501, Japan

HP: www.takebishi.co.jp/english/
 Products Page FAWEB: www.faweb.net/en/
 Support: fa-support@takebishi.co.jp

