

The Best OPC Server for OT/IT Convergence

Data Collection Visualization

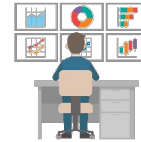


ON-PREMISE



CLOUD

Remote Maintenance



Analysis Optimization



SCADA / MES / Custom Applications

BI Tool / Dashboard / AI

SQL



HTTP

MQTT

MQTT Sparkplug B

Dxp SERVER

400+ device series connectivity

Vendor-specific Protocols

Open Standard Protocols



Factory / Plant

Facility

Infrastructure

High Performance

Provides the fastest performance in the OPC server industry and can handle many devices.

Connectivity

Supports communication with over 400 device series from more than 100 vendors using vendor-specific protocols.

High Reliability

Over 30 years of experience and more than 60,000 licenses shipped worldwide.

Try it now !



TAKEBISHI was founded in 1926 and has been providing a wide variety of OPC products and solutions worldwide since 1997.

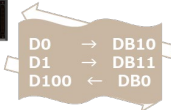
"**DeviceXPlorer OPC Server**" is an OPC Server which provides a wide range of device connectivity between devices and applications. It works as an industrial communication platform with high-performance communication and advanced features. It is fully compatible with SCADA systems, including the advanced SCADA "GENESIS" from MITSUBISHI ELECTRIC ICONICS DIGITAL SOLUTIONS, INC.



Features



- ❑ Easy Configuration
- ❑ High Speed Communication
- ❑ Communication Diagnostics
- ❑ Simulation
- ❑ Data Bridge
- ❑ Scripting (Lua Script)
- ❑ OPC UA NodeSets File Import
- ❑ CSV Import/Export



PLC2

```

2
3
4 -- Check the open result
5 if #= nil then
6   Dxp.LogErrorMessages("File Open Error(" .. msg .. ")")
7   return
8 end
9
10 -- Make CSV
11 local text = ""
12 text = text .. Dxp.GetCurrentTime() .. Format("%")
13 text = text .. @@@"Tag001":ToStringValue()
14 text = text .. @@@"Tag002":ToStringValue()
15 text = text .. @@@"Tag003":ToStringValue()
16
17 -- Write to file
18 fwrite(text, "Y")
19
20 -- Close the file
21 fclose()
22
23 -- Dump log
24 Dxp.LogMessages(text)
  
```



Cyclic or Event-driven



Output files



Device Connectivity

400+ device series from 100+ vendors



Type	Description
PLC	Mitsubishi MELSEC, Rockwell AB, Siemens S7, GE PLC, Omron SYSMAC, Jtekt TOYOPUC, Yokogawa FA-M3, Fuji MICREX, Panasonic FP, Yaskawa MP, Keyence KV, Toshiba V, Sharp SATELLITE, Azbil CPL, IAI Controller, Lsis XGT, CODESYS, Delta PLC, Saia PCD, INOVANCE PLC, and more.
NC, Robot, Machine Tool	Fanuc CNC(Focas1/2, DPRNT), Mitsubishi CNC, Mitsubishi EDM, Kawasaki Robot, Yaskawa Robot, Yamaha Robot, Shibaura Machine, SHI - Molding Machine, JSW - Molding Machine, DPRNT, Mazak INTEGREGX, Sanyo Denki SANMOTION, Wago Remote I/O, and more.
Open Network	MTConnect, MODBUS/TCP, MODBUS/RTU, OPC DA Client, OPC UA Client, EtherNet/IP, BACnet/IP, IEC61850 MMS, DNP3.0, IEC60870-5-104, ODBC Database, Shared Memory, and more.



PLC

NC/CNC

Robot

Machine Tool

Measuring Instrument

Open Standard Network



Specifications & Lineup



Item	Description	Lineup	Description
OS	Windows 11 / 10 Windows Server 2025 / 2022 / 2019 / 2016	Single Edition (DXPV7SG)	Only 1 Vendor Device Connectivity
Supported Server/Client Interfaces	OPC UA Server (Data Access, Historical Access, Alarms and Conditions, Information Model), OPC UA Client (Data Access), OPC DA/AE Server, OPC DA Client. MODBUS/TCP Server and Client, HTTP Server and Client, MQTT Pub/Sub Client, MQTT Sparkplug B Client, SQL Client	Multi Edition (DXPV7ML)	Multi Vendor Device Connectivity
Connections	Maximum 255 devices, Unlimited number of tags	Professional Edition (DXPV7PR)	Advanced OPC UA Server (HA, AC, Information Model), MQTT/HTTP/SQL Clients



TAKEBISHI CORPORATION

29, Mamedacho, Nishikyogoku, Ukyo-ku, Kyoto, 615-8501, Japan

HP: www.takebishi.co.jp/english/
Products Page FAWEB: www.faweb.net/en/
Support: fa-support@takebishi.co.jp

