

IIoT Gateway for OT/IT Convergence

Data Collection Visualization

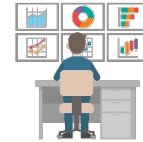


ON-PREMISE



CLOUD

Remote Maintenance



Analysis Optimization



SCADA / MES / Custom Applications

BI Tool / Dashboard / AI



Google Cloud Platform

IIoT Ready

Retrofit

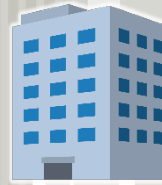
Custom Logic

No Code

**Over 320 device series
from more than 80 vendors**

Vendor-specific Protocols

Open Standard Protocols



Factory / Plant

Facility

Infrastructure

Device Connectivity
Supports communication with 320+ device series from 80+ vendors using vendor-specific protocols.

IIoT Ready
Supports several IIoT interfaces, including OPC UA, MQTT, and HTTP. Easy integration with your system.

Multi Platform
Offers both hardware and containerized software versions, embeddable in any device.



Features



- Easy Configuration (Web UI)
- Communication Diagnostics
- Data Simulation
- Data Buffering
- Alarm/Event Handling
- User Authentication
- File Operation
- Firewall

- Event Function (Custom Logic)

Trigger
<ul style="list-style-type: none"> - Cycle - Time - Value Change - Alarm Report - MQTT Subscribe - Beacon Receive <p style="text-align: right;">etc.</p>

Action
<ul style="list-style-type: none"> - Read / Write Value - File Operation - Send Email - Process Value - MQTT Publish - HTTP Request <p style="text-align: right;">etc.</p>



Device Connectivity

320+ device series from 80+ vendors



Type	Description
PLC	Mitsubishi MELSEC, Rockwell AB, Siemens S7, GE PLC, Omron SYSMAC, Jtekt TOYOPUC, Yokogawa FA-M3, Fuji MICREX, Panasonic FP, Yaskawa MP, Keyence KV, Toshiba V, Sharp SATELLITE, Azbil CPL, IAI Controller, CODESYS, Delta PLC, Inovance PLC, etc.
CNC, Robot, Machine Tool	Mitsubishi CNC/EDM/Robot, Fanuc CNC/Robot(DPRNT/MODBUS), Yamaha Robot, Shibaura Machine TOSNUC, DPRNT, Mazak INTEGRAX, Sanyo Denki SANMOTION, Wago Remote I/O, etc.
Open Network	MTConnect, MODBUS/TCP, MODBUS/RTU, MODBUS/ASCII, EtherNet/IP, BACnet/IP, IEC61850 MMS, DNP3.0, Shared Memory, Bluetooth Beacon, User-Configurable Driver, etc.



Product Lineup



Hardware Model

Lineup	Description
Compact Model DGW-C10	<ul style="list-style-type: none"> - 8 Devices / 8,192 Tags in Total - 2 Ethernet and 1 Serial (RS232C) - 100-240VAC
Global Model DGW-W710	<ul style="list-style-type: none"> - 8 Devices / 8,192 Tags in Total - 2 Ethernet and 3 Serial (RS232C x1, R485 x2) - DI 4ch / DO 4ch - 24 VDC

Software Model (Container)

Lineup	Description
Basic Model	- 1 Device / 1,024 Tags in Total
Standard Model	- 16 Devices / 8,192 Tags in Total
High Spec Model	- 64 Devices / 65,536 Tags in Total



TAKEBISHI CORPORATION

29, Mamedacho, Nishikyogoku, Ukyo-ku, Kyoto, 615-8501, Japan

HP: <https://www.takebishi.co.jp/english/>

Products Page FAWEB: <https://www.faweb.net/en/>

Support: fa-support@takebishi.co.jp



**TAKEBISHI
PRODUCT
CHECK!**

