

**DA Server Price List**

Product	Model	Support CPU	Support PLC	Price
MITSUBISHI MELSEC Ethernet DA Server	QE71DAS-US	MELSEC-Q/QnA/A	QJ71E71(-B2/B5/100) A(1S)J71(Q)E71(N/N3)(-T/B2/B5)	USD780
MITSUBISHI MELSEC Serial DA Server	QC24DAS-US	MELSEC-Q/QnA/A/FX	QJ71C24(-R2) A(1S)J71(Q/U)C24(N)(-R2/R4)	USD780
MITSUBISHI MELSEC PC Board DA Server	PCBDAS-US	MELSEC-Q/QnA/A	MELSECNET Board CC-LINK Board	Coming soon
OMRON SYSMAC Ethernet DA Server	SYSDAS-US	SYSMAC-CJ/CS SYSMAC-CV/C	CJ1W-ETN21/11 CS1W-ETN21/11/01	USD780
YOKOGAWA FA-M3 Ethernet DA Server	FAMDAS-US	FA-M3(R)	F3LE01-5T, F3LE11-0T F3LE12-0T	USD780
HITACHI HIDIC Ethernet DA Server	HIDAS-US	HIDIC-EHV/EH/H	EH-ETH LAN-ETH	USD780

**I/o Server Price List**

Product	Model	Support CPU	Support PLC	Price
MITSUBISHI MELSEC EZSocket I/O Server	EZDDE-US	MELSEC-Q/QnA/A/FX	CPU Port	USD900
Message I/O Server	MSGSVR-US	MELSEC/HIDIC	Each Ethernet Unit (Fixed buffer communication / ASR communication...)	USD900

**Specifications**

Item	Description		
OS	Windows Vista / 2003 / XP / 2000		
Service Activation	Enable		
Maximum number of PLCs	62 units / adapter		
Supported protocols	DDE, FastDDE, NetDDE, SuiteLink, OPCDA2.05A		
Tag Alias	Enable		
DDE Application Name	MelsecEthernet	SysmacEthernet	HidicEthernet
DDE Topic Name	arbitrary		
Expansion Format	Boolean	Floating point	Character string
	16bit signed integer	16bit unsigned integer	32bit signed integer
	16bit BCD	32bit BCD	Register bit position specification
	Text-format decimal	Text-format hexadecimal	
Device Name	MELSEC	X, Y, DX, DY, B, M, L, S, F, V, TS, TC, SS, SC, CS, CC, SM, SB, D, W, R, ZR, ER, BM, T, C, SN, SW, Z	
	SYSMAC	CIO, WR, HR, AR, LR, T, C, DM, EM	
	HIDIC	X, Y, L, R, M, DIF, DFN, TD, SS, WDT, MS, TMR, CU, RCU, CTU, CTD, CT, CL, WX, WY, WL, WR, WM, TC, WN	

# DataAccess Server



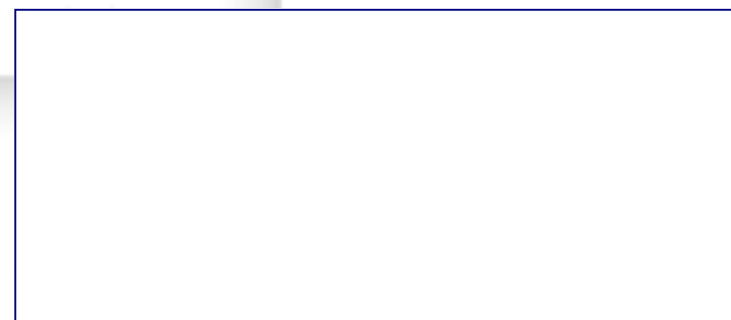
Compatible with Wonderware Archestra  
**DA Server Software**

**TAKEBISHI Corporation**



Kyoto Head Office  
 29 Mamedacho Nishikyogoku Ukyoku Kyoto 615-8501, JAPAN

Inquiry  
 TEL +81-75-325-2172 FAX +81-75-325-2273  
 fa-support@takebishi.co.jp  
 http://www.faweb.net/



**DA Server** PLC Communication Middleware

**TAKEBISHI Corporation**



# Communication Middleware that corresponds with Wonderware A<sup>2</sup> has come!!

## - Full Lineup -

### MELSEC Ethernet DAServer



DAServer corresponds with all MELSEC-Q/ QnA Series such as redundancy CPU, process CPU, multiple CPU and so on. It also supports extended file register, random access buffer communication.

### SYSMAC Ethernet DAServer



DAServer can connect SYSMAC-CJ/CS/ CV Series directly. It also supports expanded data memory access and access other station which is specified the network number.

### HIDIC Ethernet DAServer



DAServer corresponds with the latest CPU - EHV-CPU and of course EH-H Series. It provides high performance communication and it also supports "WN" - the device for FL-net.

# Device Integration

## Feature

Plug it in ArchestrA as Device Integration!

### Corresponded with Wonderware ArchestrA

SMC takes each DAServers into platform and offers the unified operability. Even if DAServers of various vendors exist, you don't have to be confused anymore. Field devices are combined with ArchestrA seamlessly.

Corresponded with standard interface specification - "OPC" for communication between applications.

### Corresponded with SuiteLink / DDE / FastDDE / OPC

As a matter of course. DAServer corresponds with DDE/FastDDE. And it also does with SuiteLink which offers high throughput and moreover "OPC" of de facto standard. DAServer offers appropriate data access for client applications in any scene.

Only change the configuration!

### Hot configuration

DAServer reflects change of communication parameter dynamically without stopping client applications. It enable to maintain the communication environment while operating by perfectly separating communication from watching.

Remote maintenance!

### Remote configuration

When the DAServer is installed in PC which works on LAN, setting change and a RAS diagnosis of the DA server can be done by remote. From office, remote maintenance of the PC installed in each place can be performed when distributed system is constructed.

Speedy tracing for finding factor of trouble!

### Various RAS functions

Various information—such as server information, communication information, current value and quality indicator can be monitored from SMC. Write transaction is stored automatically so that it makes it easier to find factor of trouble.

Recommended to instrumentation system

### Redundant communication

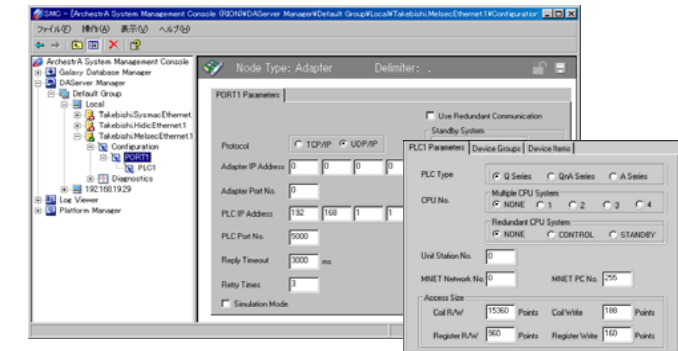
When a trouble occurs in communication route, to keep communicating, it changes to backup route automatically. It is recommended to instrumentation system which requires reliability.

Control DAServer activities from client applications

### System tags

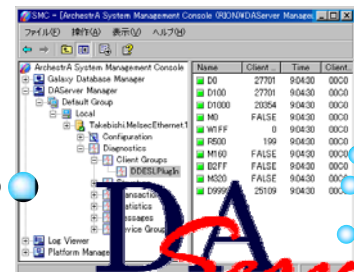
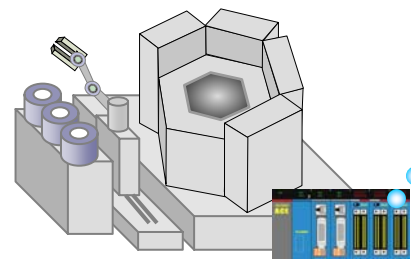
There are 13 types of system tag such as communication status, update interval, polling request and so on. It becomes to be possible to change the update interval depends on a plant status.

### Sample Window



## What's DAServer?

DAServer is a communication middleware which corresponds with "ArchestrA" that is the new architecture of Wonderware. DAServer supports DDE/ SuiteLink protocol as I/O Server used to do and moreover DAServer corresponds with "OPC" that is standard interface specification for communication between applications in the manufacturing industry world. DAServer realizes seamless system construction. It's because DAServer makes ArchestrA organize the setting and diagnosis information.



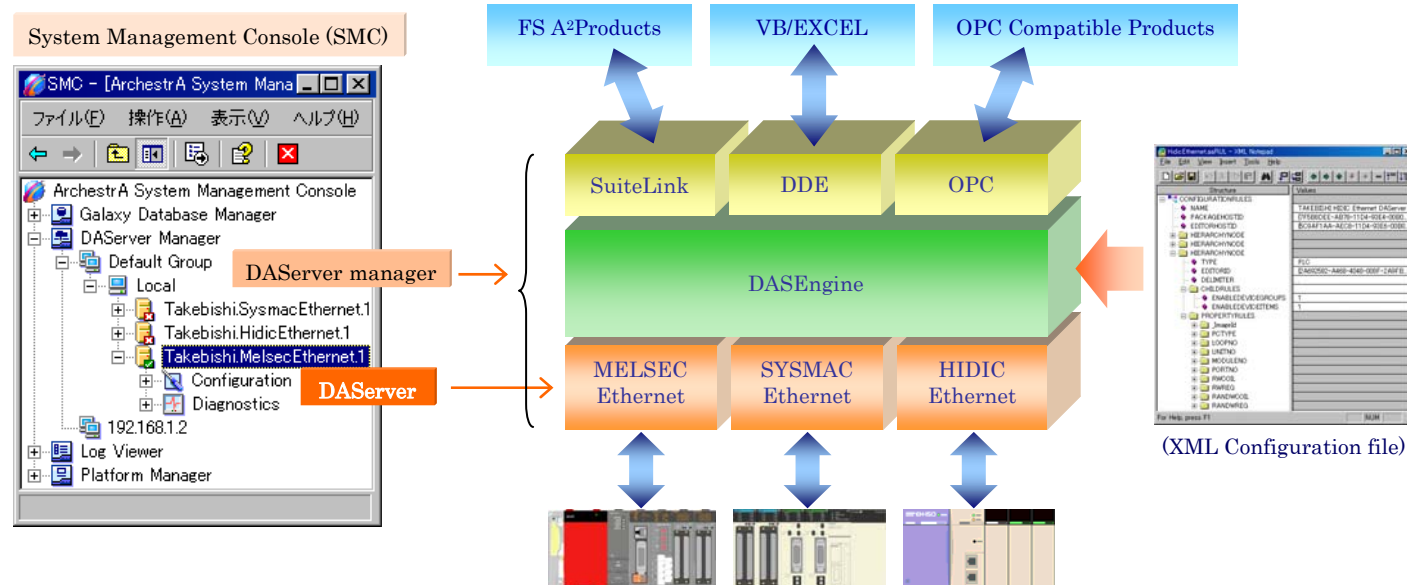
# DAServer



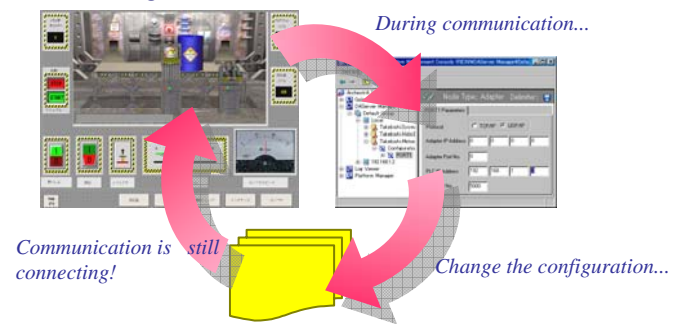
## Architecture

DAServer manager organizes DAServer and it works on the integrated platform - "System Management Console (SMC)".

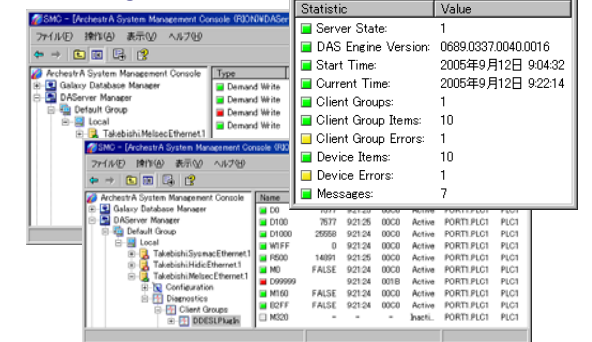
Configuration information of DAServer is described in XML format. So it enables to change the configuration, diagnose or operate DAServer which is installed in a remote PC as well as the local PC.



### Hot configuration



### RAS diagnostics



### Redundant communication

